

A close-up, low-angle shot of a red car's alloy wheel. The wheel features a complex, multi-spoke design with a central hub. The tire is a dark, high-performance rubber. The background is a clear blue sky. The overall aesthetic is sleek and modern.

**ROYALBLACK**

PCR • ALL SEASON • SUV 4X4 • COMMERCIAL • WINTER

**POWER TO GO  
FORWARD**

# Comprehensive Coverage: Meeting the needs of every kilometer

ROYALBLACK has 6 series, 33 tread patterns, and more than 1,000 SKU, accurately adapting to different models and driving scenarios:

## PCR

With low rolling resistance technology and the most advanced rubber compounds, it is energy-saving and environmentally friendly while creating the ultimate control.

## ALL SEASON

Unique 3D tread design allows worry-free switching between winter and summer.

## SUV

Taking into account both urban comfort and unpaved road passability, suitable for medium and large SUVs and crossover vehicles.

## 4X4

Fearless of gravel, mud, and rocky terrains, offering ultimate protection for rugged off-road vehicles.

## COMMERCIAL

Optimized for light commercial vehicles, with improved durability and load capacity, suitable for high-frequency use scenarios such as express delivery and urban logistics.

## WINTER

Made of ultra-soft low-temperature rubber compounds and high-density siping patterns, it shortens braking distance on ice and is specifically designed for snowy and icy regions.

## Driving Excellence, Globally Trusted Tire Solutions

As a global leader in tire manufacturing, ROYALBLACK Tire has always taken "Safety, Innovation, and Sustainability" as its core mission, and dedicated to providing high-performance, all-scenario mobility solutions for every user. With cutting-edge technology, strict quality control, and a diversified product portfolio, our tires have established a worldwide presence, with annual sales exceeding 50 million units across 150+ countries and regions, becoming a brand trusted by both consumers and industry experts.

# ROYALBLACK

# CONTENTS

## PCR



ROYAL  
EXPLORER II



ROYAL  
MILE



ROYAL  
EXPLORER EV



ROYAL  
ECO



ROYAL  
EXPLORER



ROYAL  
Performance

## ALL SEASON



ROYAL  
A/S



ROYAL  
A/S II



ROYAL  
VAN A/S

## SUV



ROYAL  
Sport



ROYAL  
Prime

## 4 x 4



ROYAL  
A/T



ROYAL  
SPIDER RT  
SPIDER-RT



ROYAL  
M/T



ROYAL  
M/T II

## COMMERCIAL



ROYAL  
Commercial



ROYAL  
VAN



ROYAL  
GAZILL

## WINTER



ROYAL  
WINTER HP



ROYAL  
WINTER UHP



ROYAL  
WINTER



ROYAL  
WINTER VAN



ROYAL  
ICE



ROYAL  
STUD



ROYAL  
STUD II



# ROYAL EXPLORER II

Service time

Economy

Maneuverability

Permissibility

Wear resistance

Safety



COMFORT



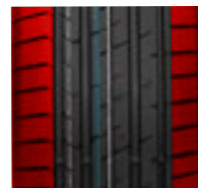
HIGH PERFORMANCE



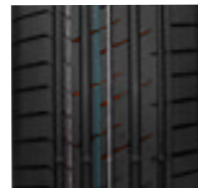
STABILITY



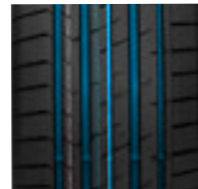
SILENCE



The asymmetrical shoulder design with soft inside and rigid outside ensures wet performance while improving tire handling performance and bringing driving pleasure.



The meteoric steel design brings the swift sensation of speed and allows the driver to enjoy the instantaneous speed.



Optimal groove ratio(5 grooves&4 grooves), improve the handling ability while ensuring the braking and safety performance of the tire on slippery roads.



The innovative sound storage cabin can effectively warm up the noise generated when driving, and the sound waves will disappear into the air.

## ROYAL EXPLORER II M+S

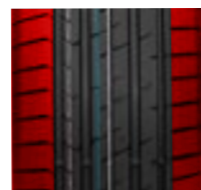


	Size	PR	Loading Index	Speed Rating	Tread Depth (mm)	Inflatable Section Width(mm)	Standard Rim	Overall Diameter (mm)	UTQG	MAX Load Kg	MAX Load IBS	MAX Pressure Kpa	MAX Pressure Psi	Sidewall Description
22	275/45ZR22 XL	-	112	W	6.9	273	9.0J	807	280AA	1120	2469	340	50	BSW
	275/40ZR22 XL	-	108	Y	6.9	278	9.5J	779	280AA	1000	2205	340	50	BSW
	275/35ZR22 XL	-	104	Y	6.9	278	9.5J	751	280AA	900	1984	340	50	BSW
	265/45ZR22 XL	-	110	W	6.9	266	9.0J	797	280AA	1060	2337	340	50	BSW
	265/40ZR22 XL	-	106	Y	6.9	271	9.5J	771	280AA	950	2094	340	50	BSW
21	265/35ZR22 XL	-	102	Y	6.9	271	9.5J	745	280AA	850	1874	340	50	BSW
	315/40ZR21 XL	-	115	Y	6.9	320	11.0J	785	280AA	1215	2679	340	50	BSW
	315/35ZR21 XL	-	111	Y	6.9	320	11.0J	753	280AA	1090	2403	340	50	BSW
	295/40ZR21 XL	-	111	Y	6.9	301	10.5J	769	280AA	1090	2403	340	50	BSW
	295/35ZR21 XL	-	107	Y	6.9	301	10.5J	739	280AA	975	2149	340	50	BSW
	275/45ZR21 XL	-	110	Y	6.9	273	9.0J	781	280AA	1060	2337	340	50	BSW
	275/40ZR21 XL	-	107	Y	6.9	278	9.5J	753	280AA	975	2149	340	50	BSW
	275/30ZR21 XL	-	98	Y	6.9	278	9.5J	699	280AA	750	1653	340	50	BSW
	255/40ZR21 XL	-	102	Y	6.9	260	9.0J	737	280AA	850	1874	340	50	BSW
	245/35ZR21 XL	-	96	Y	6.9	248	8.5J	705	280AA	710	1565	340	50	BSW
20	315/35ZR20 XL	-	110	Y	6.9	320	11.0J	728	280AA	1060	2337	340	50	BSW
	305/40ZR20 XL	-	112	Y	6.9	313	11.0J	752	280AA	1120	2469	340	50	BSW
	295/40ZR20 XL	-	110	Y	6.9	301	10.5J	744	280AA	1060	2337	340	50	BSW
	285/50ZR20 XL	-	116	W	7.2	297	9.0J	794	280AA	1250	2756	340	50	BSW
	285/45ZR20 XL	-	112	Y	6.9	285	9.5J	764	280AA	1120	2469	340	50	BSW
	275/60ZR20 XL	-	119	W	7.2	279	8.0J	838	280AA	1360	2998	340	50	BSW
	275/55ZR20 XL	-	117	W	7.2	284	8.5J	810	280AA	1285	2833	340	50	BSW
	275/50ZR20 XL	-	113	W	7.2	284	8.5J	784	280AA	1150	2535	340	50	BSW
	275/45ZR20 XL	-	110	Y	6.9	273	9.0J	756	280AA	1060	2337	340	50	BSW
	275/40ZR20 XL	-	106	Y	6.9	278	9.5J	728	280AA	950	2094	340	50	BSW
	275/35ZR20 XL	-	103	W	6.9	278	9.5J	700	280AA	875	1929	340	50	BSW
	275/30ZR20 XL	-	102	Y	6.9	278	9.5J	700	280AA	850	1874	340	50	BSW
	275/30ZR20 XL	-	97	Y	6.9	278	9.5J	674	280AA	730	1609	340	50	BSW
	265/50ZR20 XL	-	111	W	7.2	277	8.5J	774	280AA	1090	2403	340	50	BSW
	265/45ZR20 XL	-	108	Y	6.9	266	9.0J	746	280AA	1000	2205	340	50	BSW
	255/55ZR20 XL	-	110	W	7.2	265	8.0J	788	280AA	1060	2337	340	50	BSW
	255/50ZR20 XL	-	109	Y	7.2	265	8.0J	764	280AA	1030	2271	340	50	BSW
	255/50ZR20 XL	-	109	W	7.2	265	8.0J	764	280AA	1030	2271	340	50	BSW
	255/45ZR20 XL	-	105	Y	6.9	255	8.5J	738	280AA	925	2039	340	50	BSW
	255/35ZR20 XL	-	102	Y	6.9	260	9.0J	686	280AA	850	1874	340	50	BSW
	255/30ZR20 XL	-	92	Y	6.9	260	9.0J	662	280AA	630	1369	340	50	BSW
	245/50ZR20 XL	-	105	Y	6.9	253	7.5J	754	280AA	925	2039	340	50	BSW
	245/45ZR20 XL	-	103	Y	6.9	243	8.0J	728	280AA	875	1929	340	50	BSW
	245/40ZR20 XL	-	99	W	6.9	248	8.5J	704	280AA	775	1709	340	50	BSW
	245/35ZR20 XL	-	95	Y	6.9	248	8.5J	680	280AA	690	1521	340	50	BSW
	245/30ZR20 XL	-	97	Y	6.9	248	8.5J	656	280AA	730	1609	340	50	BSW
	235/55ZR20 XL	-	105	W	6.9	245	7.5J	766	280AA	925	2039	340	50	BSW
	235/45ZR20 XL	-	100	W	6.9	236	8.0J	720	280AA	800	1764	340	50	BSW
	235/30ZR20 XL	-	88	Y	6.9	241	8.5J	650	280AA	560	1235	340	50	BSW
	225/35ZR20 XL	-	93	Y	6.9	230	8.0J	666	280AA	650	1433	340	50	BSW
195/55ZR20 XL	-	95	H	6.9	201	6.0J	722	280AA	690	1521	340	50	BSW	
19	285/45ZR19 XL	-	111	Y	6.9	285	9.5J	739	280AA	1090	2403	340	50	BSW
	275/55ZR19	-	111	W	7.2	284	8.5J	785	280AA	1090	2403	300	44	BSW
	275/45ZR19 XL	-	108	W	6.9	273	9.0J	731	280AA	1000	2205	340	50	BSW
	275/40ZR19 XL	-	105	Y	6.9	278	9.5J	703	280AA	925	2039	340	50	BSW
	275/35ZR19 XL	-	100	Y	6.9	278	9.5J	675	280AA	800	1764	340	50	BSW
	275/30ZR19 XL	-	96	Y	6.9	278	9.5J	649	280AA	710	1565	340	50	BSW
	265/50ZR19 XL	-	110	W	7.2	277	8.5J	749	280AA	1060	2337	340	50	BSW
	265/35ZR19 XL	-	98	Y	6.9	271	9.5J	669	280AA	750	1653	340	50	BSW
	265/30ZR19 XL	-	93	Y	6.9	271	9.5J	643	280AA	650	1433	340	50	BSW
	255/55ZR19 XL	-	111	W	7.2	265	8.0J	763	280AA	1090	2403	340	50	BSW
	255/50ZR19 XL	-	107	Y	7.2	265	8.0J	739	280AA	975	2149	340	50	BSW
	255/50ZR19 XL	-	107	W	7.2	265	8.0J	739	280AA	975	2149	340	50	BSW
	255/45ZR19 XL	-	104	Y	6.9	255	8.5J	713	280AA	900	1984	340	50	BSW
	255/40ZR19 XL	-	100	Y	6.9	260	9.0J	687	280AA	800	1764	340	50	BSW
	255/35ZR19 XL	-	96	Y	6.9	260	9.0J	661	280AA	710	1565	340	50	BSW
	255/30ZR19 XL	-	91	Y	6.9	260	9.0J	637	280AA	615	1356	340	50	BSW
	245/55ZR19 XL	-	107	W	6.9	253	7.5J	753	280AA	975	2149	340	50	BSW
	245/55ZR19 XL	-	107	Y	6.9	253	7.5J	753	280AA	975	2149	340	50	BSW
	245/45ZR19 XL	-	102	Y	6.9	243	8.0J	703	280AA	850	1874	340	50	BSW
	245/40ZR19 XL	-	98	Y	6.9	248	8.5J	679	280AA	750	1653	340	50	BSW
	245/35ZR19 XL	-	93	Y	6.9	248	8.5J	655	280AA	650	1433	340	50	BSW
	235/55ZR19 XL	-	105	W	6.9	245	7.5J	741	280AA	925	2039	340	50	BSW
	235/55ZR19 XL	-	105	W	6.9	245	7.5J	741	280AA	925	2039	340	50	BSW
	235/55ZR19 XL	-	105	Y	6.9	245	7.5J	741	280AA	925	2039	340	50	BSW
	235/50ZR19 XL	-	103	Y	6.9	245	7.5J	719	280AA	875	1929	340	50	BSW
235/45ZR19 XL	-	99	W	6.9	236	8.0J	695	280AA	775	1709	340	50	BSW	
235/40ZR19 XL	-	96	Y	6.9	241	8.5J	671	280AA	710	1565	340	50	BSW	
235/35ZR19 XL	-	91	Y	6.9	241	8.5J	647	280AA	615	1356	340	50	BSW	
225/55ZR19 XL	-	103	W	6.9	233	7.0J	731	280AA	875	1929	340	50	BSW	
225/45ZR19 XL	-	96	Y	6.9	225	7.5J	685	280AA	710	1565	340	50	BSW	
225/40ZR19 XL	-	93	Y	6.9	230	8.0J	663	280AA	650	1433	340	50	BSW	
225/35ZR19 XL	-	88	Y	6.9	230	8.0J	641	280AA	560	1235	340	50	BSW	
215/35ZR19 XL	-	85	Y	6.9	218	7.5J	633	280AA	515	1135	340	50	BSW	

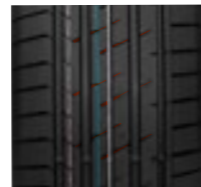
The labeling information is subject to change without notice.

# ROYAL EXPLORER II

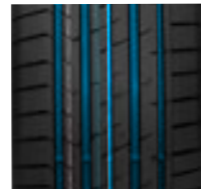
- Service time
- Economy
- Maneuverability
- Permissibility
- Wear resistance
- Safety


The asymmetrical shoulder design with soft inside and rigid outside ensures wet performance while improving tire handling performance and bringing driving pleasure.



The meteoric steel design brings the swift sensation of speed and allows the driver to enjoy the instantaneous speed.



Optimal groove ratio(5 grooves&4 grooves), improve the handling ability while ensuring the braking and safety performance of the tire on slippery roads.



The innovative sound storage cabin can effectively warm up the noise generated when driving, and the sound waves will disappear into the air.



COMFORT



HIGH PERFORMANCE



STABILITY



SILENCE

## ROYAL EXPLORER II M+S



Size	PR	Loading Index	Speed Rating	Tread Depth (mm)	Inflatable Section Width(mm)	Standard Rim	Overall Diameter (mm)	UTQG	MAX Load Kg	MAX Load IBS	MAX Pressure Kpa	MAX Pressure Psi	Sidewall Description	
18	275/40ZR18 XL	-	103	Y	6.9	278	9.5J	677	280AA	875	1929	340	50	BSW
	275/35ZR18 XL	-	99	Y	6.9	278	9.5J	649	280AA	775	1709	340	50	BSW
	265/40ZR18 XL	-	101	Y	6.9	271	9.5J	669	280AA	825	1819	340	50	BSW
	265/35ZR18 XL	-	97	Y	6.9	271	9.5J	643	280AA	730	1609	340	50	BSW
	255/55ZR18 XL	-	109	Y	6.9	265	8.0J	737	280AA	1030	2271	340	50	BSW
	255/45ZR18 XL	-	103	W	6.9	255	8.5J	687	280AA	875	1929	340	50	BSW
	255/40ZR18 XL	-	99	Y	6.9	260	9.0J	661	280AA	775	1709	340	50	BSW
	255/35ZR18 XL	-	94	Y	6.9	260	9.0J	635	280AA	670	1477	340	50	BSW
	245/45ZR18 XL	-	100	Y	6.9	243	8.0J	677	280AA	800	1764	340	50	BSW
	245/40ZR18 XL	-	97	Y	6.9	248	8.5J	653	280AA	730	1609	340	50	BSW
	245/35ZR18 XL	-	92	Y	6.9	248	8.5J	629	280AA	630	1389	340	50	BSW
	235/55ZR18 XL	-	104	W	6.9	245	7.5J	715	280AA	900	1984	340	50	BSW
	235/50ZR18 XL	-	104	W	6.9	245	7.5J	715	280AA	900	1984	340	50	BSW
	235/45ZR18 XL	-	101	Y	6.9	245	7.5J	693	280AA	825	1819	340	50	BSW
	235/40ZR18 XL	-	98	Y	6.9	236	8.0J	669	280AA	750	1653	340	50	BSW
	235/35ZR18 XL	-	98	W	6.9	236	8.0J	669	280AA	750	1653	340	50	BSW
	235/40ZR18 XL	-	95	Y	6.9	241	8.5J	645	280AA	690	1521	340	50	BSW
	225/55ZR18 XL	-	102	W	6.9	233	7.0J	705	280AA	850	1874	340	50	BSW
	225/50ZR18 XL	-	99	W	6.9	233	7.0J	683	280AA	775	1709	340	50	BSW
	225/45ZR18 XL	-	95	Y	6.9	225	7.5J	659	280AA	690	1521	340	50	BSW
	225/40ZR18 XL	-	92	W	6.9	225	7.5J	659	280AA	690	1521	340	50	BSW
	225/35ZR18 XL	-	87	Y	6.9	230	8.0J	637	280AA	630	1389	340	50	BSW
	215/55ZR18 XL	-	99	W	6.9	226	7.0J	693	280AA	775	1709	340	50	BSW
	215/50ZR18 XL	-	99	W	6.9	226	7.0J	693	280AA	775	1709	340	50	BSW
	215/45ZR18 XL	-	92	W	6.9	226	7.0J	673	280AA	630	1389	300	44	BSW
	215/40ZR18 XL	-	89	W	6.9	213	7.0J	651	280AA	650	1433	340	50	BSW
	215/35ZR18 XL	-	84	W	6.9	218	7.5J	629	280AA	580	1279	340	50	BSW
	205/40ZR18 XL	-	86	W	6.9	212	7.5J	621	280AA	500	1102	340	50	BSW
17	245/45ZR17 XL	-	99	W	6.9	243	8.0J	652	280AA	775	1709	340	50	BSW
	245/40ZR17 XL	-	95	W	6.9	248	8.5J	628	280AA	690	1521	340	50	BSW
	235/55ZR17 XL	-	103	W	6.9	245	7.5J	690	280AA	875	1929	340	50	BSW
	235/50ZR17 XL	-	100	W	6.9	245	7.5J	668	280AA	800	1764	340	50	BSW
	235/45ZR17 XL	-	97	W	6.9	236	8.0J	644	280AA	730	1609	340	50	BSW
	235/40ZR17 XL	-	97	Y	6.9	236	8.0J	644	280AA	730	1609	340	50	BSW
	225/55ZR17 XL	-	101	W	6.9	233	7.0J	680	280AA	825	1819	340	50	BSW
	225/50ZR17 XL	-	101	W	6.9	233	7.0J	680	280AA	825	1819	340	50	BSW
	225/45ZR17 XL	-	98	Y	6.9	233	7.0J	658	280AA	750	1653	340	50	BSW
	225/40ZR17 XL	-	98	W	6.9	233	7.0J	658	280AA	750	1653	340	50	BSW
	225/35ZR17 XL	-	94	W	6.9	225	7.5J	634	280AA	670	1477	340	50	BSW
	215/55ZR17 XL	-	98	W	6.9	226	7.0J	668	280AA	750	1653	340	50	BSW
	215/50ZR17 XL	-	98	W	6.9	226	7.0J	668	280AA	750	1653	340	50	BSW
	215/45ZR17 XL	-	95	W	6.9	226	7.0J	648	280AA	690	1521	340	50	BSW
	215/40ZR17 XL	-	95	W	6.9	226	7.0J	648	280AA	690	1521	340	50	BSW
	215/35ZR17 XL	-	91	W	6.9	213	7.0J	626	280AA	615	1356	340	50	BSW
	205/55ZR17 XL	-	93	W	6.9	214	6.5J	658	280AA	690	1521	340	50	BSW
	205/50ZR17 XL	-	93	W	6.9	214	6.5J	638	280AA	650	1433	340	50	BSW
	205/45ZR17 XL	-	88	W	6.9	206	7.0J	616	280AA	560	1235	340	50	BSW
	205/40ZR17 XL	-	84	W	6.9	212	7.5J	596	280AA	500	1102	340	50	BSW
	195/45ZR17 XL	-	85	W	6.9	195	6.5J	608	280AA	515	1135	340	50	BSW
16	195/40ZR17 XL	-	81	W	6.9	200	7.0J	588	280AA	462	1019	340	50	BSW
	225/55ZR16 XL	-	99	W	6.9	233	7.0J	654	280AA	775	1709	340	50	BSW
	225/50ZR16 XL	-	96	W	6.9	233	7.0J	632	280AA	710	1565	340	50	BSW
	215/40ZR16 XL	-	86	W	6.9	218	7.5J	578	280AA	530	1168	340	50	BSW
	205/50ZR16 XL	-	91	W	6.9	214	6.5J	612	280AA	615	1356	340	50	BSW
15	205/45ZR16 XL	-	87	W	6.9	206	7.0J	590	280AA	545	1201	340	50	BSW
	205/50R15	-	86	V	6.9	214	6.5J	587	280AA	530	1168	300	44	BSW

The labeling information is subject to change without notice.

# ROYAL MILE

- Service time
- Economy
- Maneuverability
- Permissibility
- Wear resistance
- Safety



- Comfortable silent performance**  
Adopt 5 frequency pattern block, virtual analysis and optimized permutation design, effectively reduce the pattern noise resonance phenomenon, reduce product noise, improve driving comfort.
- Excellent wetland performance**  
Optimization of longitudinal/transverse groove design and the use of the best groove curve, improve the drainage performance of tires in wetlands and greatly improve the safety performance of tires.
- Extraordinary handling performance**  
The internal and external asymmetrical shoulder design is adopted to ensure wet performance while improving tire handling performance, bringing driving pleasure.
- Excellent wear resistance**  
The optimum sea-land ratio and optimized steel sheet design can prevent the stress concentration when the tire is running, so that all points of the tire are uniformly worn, and the wear performance is improved.

## ROYALMILE M+S



	Size	PR	Loading Index	Speed Rating	Tread Depth (mm)	Inflatable Section Width(mm)	Standard Rim	Overall Diameter (mm)	UTQG	MAX Load Kg	MAX Load lBS	MAX Pressure Kpa	MAX Pressure Psi	Sidewall Description
14	215/70R14	-	96	H	7	221	6.5J	658	380AA	710	1565	300	44	BSW
	205/70R14	-	95	H	7	209	6.0J	644	380AA	690	1521	300	44	BSW
	205/60R14	-	88	H	7.3	209	6.0J	602	380AA	560	1235	300	44	BSW
	195/70R14	-	91	H	7	201	6.0J	630	380AA	615	1356	300	44	BSW
	195/65R14	-	89	H	7	201	6.0J	610	380AA	580	1279	300	44	BSW
	195/60R14	-	86	H	7	201	6.0J	590	380AA	530	1168	300	44	BSW
	185/70R14	-	88	H	6.7	189	5.5J	616	360AA	560	1235	300	44	BSW
	185/65R14	-	86	H	6.7	189	5.5J	596	360AA	530	1168	300	44	BSW
	185/60R14	-	82	H	6.7	189	5.5J	578	360AA	475	1047	300	44	BSW
	185/55R14	-	80	H	7	194	6.0J	560	380AA	450	992	300	44	BSW
	185/50R14	-	77	V	7	194	6.0J	542	380AA	412	908	300	44	BSW
	175/75R14	-	86	T	6.6	177	5.0J	618	360AA	530	1168	300	44	BSW
	175/70R14 XL	-	88	T	6.7	177	5.0J	602	360AA	560	1235	340	50	BSW
	175/70R14	-	84	H	6.7	177	5.0J	602	360AA	500	1102	300	44	BSW
	175/70R14	-	84	T	6.7	177	5.0J	602	360AA	500	1102	300	44	BSW
	175/65R14 XL	-	86	T	6.7	177	5.0J	584	360AA	530	1168	340	50	BSW
	175/65R14	-	82	T	6.7	177	5.0J	584	360AA	475	1047	300	44	BSW
	175/65R14	-	82	H	6.7	177	5.0J	584	360AA	475	1047	300	44	BSW
	175/60R14	-	79	H	6.6	177	5.0J	566	360AA	437	963	300	44	BSW
	165/70R14 XL	-	85	T	6.7	170	5.0J	588	360AA	515	1135	340	50	BSW
165/70R14	-	81	H	6.7	170	5.0J	588	360AA	462	1019	300	44	BSW	
165/70R14	-	81	T	6.7	170	5.0J	588	360AA	462	1019	300	44	BSW	
165/65R14	-	79	T	6.7	170	5.0J	570	360AA	437	963	300	44	BSW	
165/65R14	-	79	H	6.7	170	5.0J	570	360AA	437	963	300	44	BSW	
165/55R14	-	72	H	6.6	170	5.0J	538	360AA	355	783	300	44	BSW	
165/60R14	-	75	H	6.7	170	5.0J	554	360AA	387	853	300	44	BSW	
155/65R14	-	75	H	6.7	157	4.5J	558	360AA	387	853	300	44	BSW	
13	185/70R13	-	86	T	6.7	189	5.5J	590	360AA	530	1168	300	44	BSW
	175/75R13	-	84	T	6.6	177	5.0J	592	360AA	500	1102	300	44	BSW
	175/70R13	-	82	T	6.7	177	5.0J	576	360AA	475	1047	300	44	BSW
	175/65R13	-	80	T	6.7	177	5.0J	558	360AA	450	992	300	44	BSW
	175/60R13	-	77	H	6.7	177	5.0J	540	360AA	412	908	300	44	BSW
	165/80R13	-	83	T	6.7	165	4.5J	594	360AA	487	1074	300	44	BSW
	165/70R13	-	79	T	6.7	170	5.0J	562	360AA	437	963	300	44	BSW
	165/65R13	-	77	T	6.7	170	5.0J	544	360AA	412	908	300	44	BSW
	155/80R13	-	79	T	6.7	157	4.5J	578	360AA	437	963	300	44	BSW
	155/70R13	-	75	T	6.7	157	4.5J	548	360AA	387	853	300	44	BSW
	155/65R13	-	73	T	6.7	157	4.5J	532	360AA	365	805	300	44	BSW
	145/80R13	-	75	T	6.7	145	4.0J	562	360AA	387	853	300	44	BSW
12	145/70R13	-	71	T	6.7	150	4.5J	534	360AA	345	761	300	44	BSW
	175/70R12	-	80	T	6.7	177	5.0J	551	360AA	450	992	300	44	BSW
	165/70R12	-	77	T	6.7	170	5.0J	537	360AA	412	908	300	44	BSW
	155/70R12	-	73	T	6.7	157	4.5J	523	360AA	365	805	300	44	BSW
	145/70R12	-	69	T	6.7	150	4.5J	509	360AA	325	716	300	44	BSW

The labeling information is subject to change without notice.

# ROYAL MILE

- Service time
- Economy
- Maneuverability
- Permissibility
- Wear resistance
- Safety



- Comfortable silent performance**  
Adopt 5 frequency pattern block, virtual analysis and optimized permutation design, effectively reduce the pattern block noise resonance phenomenon, reduce product noise, improve driving comfort.
- Excellent wetland performance**  
Optimization of longitudinal/transverse groove design and the use of the best groove curve, improve the drainage performance of tires in wetlands and greatly improve the safety performance of tires.
- Extraordinary handling performance**  
The internal and external asymmetrical shoulder design is adopted to ensure wet performance while improving tire handling performance, bringing driving pleasure.
- Excellent wear resistance**  
The optimum sea-land ratio and optimized steel sheet design can prevent the stress concentration when the tire is running, so that all points of the tire are uniformly worn, and the wear performance is improved.

## ROYALMILE M+S



Size	PR	Loading Index	Speed Rating	Tread Depth (mm)	Inflatable Section Width(mm)	Standard Rim	Overall Diameter (mm)	UTQG	MAX Load Kg	MAX Load lBS	MAX Pressure Kpa	MAX Pressure Psi	Sidewall Description
16 235/60R16	-	100	H	7.3	240	7.0J	688	380AA	800	1764	300	44	BSW
225/60R16	-	98	H	7.3	228	6.5J	676	380AA	750	1653	300	44	BSW
215/65R16	-	98	H	7.3	221	6.5J	686	380AA	750	1653	300	44	BSW
215/60R16 XL	-	99	H	7.3	221	6.5J	664	380AA	775	1709	340	50	BSW
215/60R16	-	95	V	7.3	221	6.5J	664	380AA	690	1521	300	44	BSW
215/55ZR16 XL	-	97	W	7.3	226	7.0J	642	380AA	730	1609	340	50	BSW
215/45ZR16 XL	-	90	W	7.8	213	7.0J	600	380AA	600	1323	340	50	BSW
205/65R16	-	95	H	7.3	209	6.0J	672	380AA	690	1521	300	44	BSW
205/60R16 XL	-	96	H	7.3	209	6.0J	652	380AA	710	1565	340	50	BSW
205/60R16	-	92	V	7.3	209	6.0J	652	380AA	630	1389	300	44	BSW
205/55ZR16 XL	-	94	W	7.3	214	6.5J	632	380AA	670	1477	340	50	BSW
205/55R16	-	91	V	7.3	214	6.5J	632	380AA	615	1356	300	44	BSW
195/60R16	-	89	H	7	201	6.0J	640	380AA	580	1279	300	44	BSW
195/55R16 XL	-	91	V	7	201	6.0J	620	380AA	615	1356	340	50	BSW
195/55R16	-	87	V	7	201	6.0J	620	380AA	545	1201	300	44	BSW
195/50R16 XL	-	88	V	7	201	6.0J	602	380AA	560	1235	340	50	BSW
195/45R16 XL	-	84	V	7	195	6.5J	582	380AA	500	1102	340	50	BSW
185/60R16	-	86	H	6.7	189	5.5J	628	360AA	530	1168	300	44	BSW
185/55R16 XL	-	87	V	7	194	6.0J	610	380AA	545	1201	340	50	BSW
185/50R16	-	81	V	7	194	6.0J	592	380AA	462	1019	300	44	BSW
175/50R16	-	77	V	6.7	182	5.5J	582	360AA	412	908	300	44	BSW
15 225/70R15	-	100	H	7	228	6.5J	697	380AA	800	1764	300	44	BSW
215/70R15	-	98	H	7	221	6.5J	683	380AA	750	1653	300	44	BSW
215/65R15	-	96	H	7.3	221	6.5J	661	380AA	710	1565	300	44	BSW
205/70R15	-	96	H	7	209	6.0J	669	380AA	710	1565	300	44	BSW
205/65R15	-	94	H	7.3	209	6.0J	647	380AA	670	1477	300	44	BSW
205/65R15	-	94	V	7.3	209	6.0J	647	380AA	670	1477	300	44	BSW
205/60R15	-	91	V	7.3	209	6.0J	627	380AA	615	1356	300	44	BSW
205/55R15	-	88	V	7.3	214	6.5J	607	380AA	560	1235	300	44	BSW
195/65R15 XL	-	95	H	7	201	6.0J	635	380AA	690	1521	340	50	BSW
195/65R15	-	91	H	7	201	6.0J	635	380AA	615	1356	300	44	BSW
195/65R15	-	91	V	7	201	6.0J	635	380AA	615	1356	300	44	BSW
195/60R15	-	88	H	7	201	6.0J	615	380AA	560	1235	300	44	BSW
195/60R15	-	88	V	7	201	6.0J	615	360AA	560	1235	300	44	BSW
195/55R15	-	85	V	7	201	6.0J	595	380AA	515	1135	300	44	BSW
195/50R15	-	82	V	7	201	6.0J	577	380AA	475	1047	300	44	BSW
195/45R15 XL	-	82	V	7	195	6.5J	557	380AA	475	1047	340	50	BSW
185/65R15 XL	-	92	T	6.7	189	5.5J	621	360AA	630	1389	340	50	BSW
185/65R15	-	88	H	6.7	189	5.5J	621	360AA	560	1235	300	44	BSW
185/60R15 XL	-	88	H	6.7	189	5.5J	603	360AA	560	1235	340	50	BSW
185/60R15	-	84	H	6.7	189	5.5J	603	360AA	500	1102	300	44	BSW
185/55R15	-	82	V	7	194	6J	585	380AA	475	1047	300	44	BSW
185/45R15	-	75	V	7	183	6.0J	547	380AA	387	853	300	44	BSW
175/65R15	-	84	H	6.7	177	5.0J	609	360AA	500	1102	300	44	BSW
175/60R15	-	81	H	6.7	177	5.0J	591	360AA	462	1019	300	44	BSW
175/55R15	-	77	H	6.7	182	5.5J	573	360AA	412	908	300	44	BSW
175/50R15	-	75	H	6.7	182	5.5J	557	360AA	387	853	300	44	BSW
165/65R15	-	81	H	6.7	170	5.0J	595	360AA	462	1019	300	44	BSW
165/60R15	-	77	H	6.7	170	5.0J	579	360AA	412	908	300	44	BSW
165/50R15	-	72	V	6.6	170	5.0J	547	360AA	355	783	300	44	BSW
155/60R15	-	74	T	6.7	157	4.5J	567	360AA	375	827	300	44	BSW
145/65R15	-	72	T	6.7	150	4.5J	569	360AA	355	783	300	44	BSW

The labeling information is subject to change without notice.

# ROYAL EXPLORER EV

- Service time
- Economy
- Maneuverability
- Permissibility
- Wear resistance
- Safety



- The asymmetrical shoulder design with soft inside and rigid outside ensures wet performance while improving tire handling performance and bringing driving pleasure.
- The meteoric steel design brings the swift sensation of speed and allows the driver to enjoy the instantaneous speed.
- Optimal groove ratio(5 grooves&4 grooves), improve the handling ability while ensuring the braking and safety performance of the tire on slippery roads.
- The innovative sound storage cabin can effectively warm up the noise generated when driving, and the sound waves will disappear into the air.

## ROYAL EXOLORER EV M+S



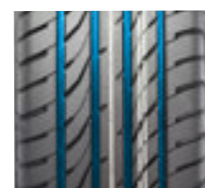
	Size	PR	Loading Index	Speed Rating	Tread Depth (mm)	Inflatable Section Width(mm)	Standard Rim	Overall Diameter (mm)	UTQG	MAX Load Kg	MAX Load lBS	MAX Pressure Kpa	MAX Pressure Psi	Sidewall Description
21	275/35ZR21 XL	-	103	Y	6.9	278	9.5J	725	280AA	875	1929	340	50	BSW
	275/35ZR21 XL	-	103	W	6.9	278	9.5J	725	280AA	875	1929	340	50	BSW
	265/45ZR21 XL	-	108	Y	6.9	266	9.0J	771	280AA	1000	2205	340	50	BSW
	265/45ZR21 XL	-	108	W	6.9	266	9.0J	771	280AA	1000	2205	340	50	BSW
	265/35ZR21 XL	-	101	Y	6.9	271	9.5J	719	280AA	825	1819	340	50	BSW
	265/35ZR21 XL	-	101	W	6.9	271	9.5J	719	280AA	825	1819	340	50	BSW
20	255/35ZR21 XL	-	98	Y	6.9	260	9.0J	711	280AA	750	1653	340	50	BSW
	255/35ZR21 XL	-	98	W	6.9	260	9.0J	711	280AA	750	1653	340	50	BSW
	245/35ZR21 XL	-	96	W	6.9	248	8.5J	705	280AA	710	1565	340	50	BSW
	245/35ZR21 XL	-	96	Y	6.9	248	8.5J	705	280AA	710	1565	340	50	BSW
	275/45ZR20 XL	-	110	W	6.9	273	9.0J	756	280AA	1060	2337	340	50	BSW
	275/45ZR20 XL	-	110	Y	6.9	273	9.0J	756	280AA	1060	2337	340	50	BSW
	255/50R20 XL	-	109	V	7.2	265	8.0J	764	280AA	1030	2271	340	50	BSW
	255/45ZR20 XL	-	105	Y	6.9	255	8.5J	738	280AA	925	2039	340	50	BSW
	255/45ZR20 XL	-	105	W	6.9	255	8.5J	738	280AA	925	2039	340	50	BSW
	255/40ZR20 XL	-	101	Y	6.9	260	9.0J	712	280AA	825	1819	340	50	BSW
	255/40ZR20 XL	-	101	W	6.9	260	9.0J	712	280AA	825	1819	340	50	BSW
	235/35ZR20 XL	-	92	Y	6.9	241	8.5J	672	280AA	630	1389	340	50	BSW
19	235/35ZR20 XL	-	92	W	6.9	241	8.5J	672	280AA	630	1389	340	50	BSW
	255/50R19 XL	-	107	V	7.2	265	8.0J	739	280AA	975	2149	340	50	BSW
	245/45ZR19 XL	-	102	Y	6.9	243	8.0J	703	280AA	850	1874	340	50	BSW
	245/45ZR19 XL	-	102	W	6.9	243	8.0J	703	280AA	850	1874	340	50	BSW
18	235/40ZR19 XL	-	96	Y	6.9	241	8.5J	671	280AA	710	1565	340	50	BSW
	235/40ZR19 XL	-	96	W	6.9	241	8.5J	671	280AA	710	1565	340	50	BSW
	235/45ZR18 XL	-	98	Y	6.9	236	8.0J	669	280AA	750	1653	340	50	BSW
	235/45ZR18 XL	-	98	W	6.9	236	8.0J	669	280AA	750	1653	340	50	BSW

The labeling information is subject to change without notice.

# ROYAL ECO

- Service time
- Economy
- Maneuverability
- Permissibility
- Wear resistance
- Safety

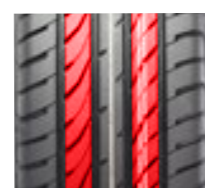




Provide optimized tread handing, wet skid resistance.



Holding strong, directional precision, handing, braking drive good.



To achieve a quiet and comfortable ride.



High-speed, slippery, falling resistanc, noise, the best performance combination.

-   
ECONOMY
-   
STABILITY
-   
SILENCE
-   
WET

## ROYAL ECO M+S



	Size	PR	Loading Index	Speed Rating	Tread Depth (mm)	Inflatable Section Width(mm)	Standard Rim	Overall Diameter (mm)	UTQG	MAX Load Kg	MAX Load IBS	MAX Pressure Kpa	MAX Pressure Psi	Sidewall Description
19	225/55R19 XL	-	103	V	7.8	233	7J	731	300AA	875	1929	340	50	BSW
18	215/55R18 XL	-	99	V	7.8	226	7J	693	300AA	775	1709	340	50	BSW
17	225/45R17 XL	-	94	W	7.8	225	7 1/2J	634	300AA	670	1477	340	50	BSW
	215/55R17 XL	-	98	W	7.8	226	7J	668	300AA	750	1653	340	50	BSW
	215/50R17 XL	-	95	W	7.8	226	7J	648	300AA	690	1521	340	50	BSW
16	215/45R17 XL	-	91	W	7.8	213	7J	626	300AA	615	1356	340	50	BSW
	235/60R16	-	100	H	8	240	7J	688	500AA	800	1764	300	44	BSW
	225/60R16	-	98	H	7.9	228	6 1/2J	676	500AA	750	1653	300	44	BSW
	215/70R16	-	100	H	7.8	221	6 1/2J	708	500AA	800	1764	300	44	BSW
	215/65R16	-	98	H	8	221	6 1/2J	686	500AA	750	1653	300	44	BSW
	215/60R16	-	95	V	7.9	221	6 1/2J	664	500AA	690	1521	300	44	BSW
	215/55R16 XL	-	97	W	7.4	226	7J	642	300AA	730	1609	340	50	BSW
	205/60R16	-	92	V	7.8	209	6J	652	500AA	630	1389	300	44	BSW
	205/55R16	-	91	V	7.2	214	6 1/2J	632	500AA	615	1356	300	44	BSW
15	195/60R16	-	89	H	7.3	201	6J	640	500AA	580	1279	300	44	BSW
	225/70R15	-	100	H	7.8	228	6 1/2J	697	500AA	800	1764	300	44	BSW
	215/70R15	-	98	H	7.8	221	6 1/2J	683	500AA	750	1653	300	44	BSW
	215/65R15	-	96	H	8	221	6 1/2J	661	500AA	710	1565	300	44	BSW
	215/60R15	-	94	H	7.8	221	6 1/2J	639	500AA	670	1477	300	44	BSW
	205/70R15	-	96	H	7.8	209	6J	669	500AA	710	1565	300	44	BSW
	205/65R15	-	94	H	7.6	209	6J	647	500AA	670	1477	300	44	BSW
	205/60R15	-	91	V	7.8	209	6J	627	500AA	615	1356	300	44	BSW
	195/65R15	-	91	V	7.3	201	6J	635	500AA	615	1356	300	44	BSW
	195/65R15	-	91	H	7.3	201	6J	635	500AA	615	1356	300	44	BSW
	195/60R15	-	88	H	7.5	201	6J	615	500AA	560	1235	300	44	BSW
	185/65R15	-	88	H	7.3	189	5 1/2J	621	500AA	560	1235	300	44	BSW
	185/60R15	-	84	H	7.3	189	5 1/2J	603	500AA	500	1102	300	44	BSW
	185/55R15	-	82	V	7.5	194	6J	585	500AA	475	1047	300	44	BSW
14	175/65R15	-	84	H	7.1	177	5J	609	500AA	500	1102	300	44	BSW
	205/70R14	-	95	H	7.8	209	6J	644	500AA	690	1521	300	44	BSW
	195/70R14	-	91	H	7.3	201	6J	630	500AA	615	1356	300	44	BSW
	195/60R14	-	86	H	7.5	201	6J	590	500AA	530	1168	300	44	BSW
	185/70R14	-	88	H	7.3	189	5 1/2J	616	420AA	560	1235	300	44	BSW
	185/65R14	-	86	H	7.3	189	5 1/2J	596	420AA	530	1168	300	44	BSW
	185/60R14	-	82	H	7.3	189	5 1/2J	578	420AA	475	1047	300	44	BSW
	175/70R14	-	84	H	7.1	177	5J	602	420AA	500	1102	300	44	BSW
	175/65R14	-	82	H	7.1	177	5J	584	420AA	475	1047	300	44	BSW
	175/60R14	-	79	H	7	177	5J	566	420AA	437	963	300	44	BSW
13	165/70R14	-	81	H	6.9	170	5J	588	420AA	462	1019	300	44	BSW
	185/70R13	-	86	T	7.3	189	5.50B	590	420AA	530	1168	300	44	BSW
	175/70R13	-	82	T	7.1	177	5.00B	576	420AA	475	1047	300	44	BSW
	165/70R13	-	79	T	6.9	170	5.00B	562	420AA	437	963	300	44	BSW
	165/65R13	-	77	T	7.1	170	5.00B	544	420AA	412	908	300	44	BSW
	155/70R13	-	75	T	7.5	157	4.50B	548	420AA	387	853	300	44	BSW
12	155/65R13	-	73	T	7.1	157	4.50B	532	420AA	365	805	300	44	BSW
	165/70R12	-	77	T	6.9	170	5.00B	537	420AA	412	908	300	44	BSW
	155/70R12	-	73	T	7.1	157	4.50B	523	420AA	365	805	300	44	BSW
	145/70R12	-	69	T	7.1	150	4.50B	509	420AA	325	716	300	44	BSW

The labeling information is subject to change without notice.

# ROYAL EXPLORER



ECONOMY



STABILITY



SILENCE



WET

Service time

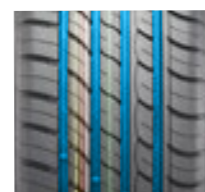
Economy

Maneuverability

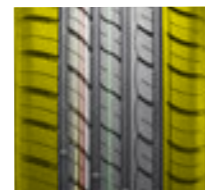
Permissibility

Wear resistance

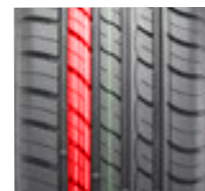
Safety



A streamlined and continuity of both the asymmetric tread design.



The difference between both sides of the shoulders rigid design.



Wide running surface.



"Rim Protector" special design.

## ROYAL EXPLORER M+S



	Size	PR	Loading Index	Speed Rating	Tread Depth (mm)	Inflatable Section Width(mm)	Standard Rim	Overall Diameter (mm)	UTQG	MAX Load Kg	MAX Load lBS	MAX Pressure Kpa	MAX Pressure Psi	Sidewall Description
24	305/35R24 XL	-	112	V	7.8	313	11J	824	300AA	1120	2469	340	50	BSW
	295/35R24 XL	-	110	V	7.8	301	10 1/2J	816	300AA	1060	2337	340	50	BSW
22	245/30ZR24 XL	-	94	W	7	248	8 1/2J	758	300AA	670	1474	340	50	BSW
	305/45R22 XL	-	118	V	7.8	303	10J	833	300AA	1320	2910	340	50	BSW
	305/40R22 XL	-	114	V	7.8	313	11J	803	300AA	1180	2601	340	50	BSW
	285/45R22 XL	-	114	V	7.8	285	9 1/2J	815	300AA	1180	2601	340	50	BSW
20	265/35R22 XL	-	102	V	7.8	271	9 1/2J	745	300AA	850	1874	340	50	BSW
	245/30ZR22 XL	-	92	W	7	248	8 1/2J	707	300AA	630	1389	340	50	BSW
	275/45ZR20 XL	-	110	W	7.8	273	9J	756	300AA	1060	2337	340	50	BSW
	275/40ZR20 XL	-	106	W	7.8	278	9 1/2J	728	300AA	950	2094	340	50	BSW
	255/35ZR20 XL	-	97	W	7	260	9J	686	300AA	730	1609	340	50	BSW
	275/30ZR20 XL	-	97	W	7.8	278	9 1/2J	674	300AA	730	1609	340	50	BSW
	255/45ZR20 XL	-	105	W	7	255	8 1/2J	738	300AA	925	2039	340	50	BSW
	245/45ZR20 XL	-	103	W	7	243	8J	728	300AA	875	1929	340	50	BSW
	245/35ZR20 XL	-	95	W	7	248	8 1/2J	680	300AA	690	1521	340	50	BSW
	225/35ZR20 XL	-	93	W	7	230	8J	666	300AA	650	1433	340	50	BSW
19	225/35ZR20 XL	-	90	W	7	230	8J	666	300AA	600	1323	340	50	BSW
	275/35ZR19 XL	-	100	W	7.8	278	9 1/2J	675	300AA	800	1764	340	50	BSW
	255/55R19 XL	-	111	V	7.8	265	8J	763	300AA	1090	2403	340	50	BSW
	255/50R19 XL	-	107	V	7.8	265	8J	739	300AA	975	2149	340	50	BSW
	255/35ZR19 XL	-	96	W	7	260	9J	661	300AA	710	1565	340	50	BSW
	245/45ZR19 XL	-	102	W	7	243	8J	703	300AA	850	1874	340	50	BSW
	245/40ZR19 XL	-	98	W	7	248	8 1/2J	679	300AA	750	1653	340	50	BSW
	245/35ZR19 XL	-	93	W	7	248	8 1/2J	655	300AA	650	1433	340	50	BSW
	235/55R19 XL	-	105	V	7.2	245	7 1/2J	741	300AA	925	2039	340	50	BSW
	235/35ZR19 XL	-	91	W	7	241	8 1/2J	647	300AA	615	1356	340	50	BSW
	225/55R19 XL	-	103	V	7	233	7J	731	300AA	875	1929	340	50	BSW
	225/35ZR19 XL	-	88	W	7	230	8J	641	300AA	560	1235	340	50	BSW
	265/35ZR18 XL	-	97	W	7.8	271	9 1/2J	643	300AA	730	1609	340	50	BSW
	255/55R18 XL	-	109	V	7.8	265	8J	737	300AA	1030	2271	340	50	BSW
255/45ZR18 XL	-	103	W	7	255	8 1/2J	687	300AA	875	1929	340	50	BSW	
255/40ZR18 XL	-	99	W	7	260	9J	661	300AA	775	1709	340	50	BSW	
255/35ZR18 XL	-	94	W	7	260	9J	635	300AA	670	1477	340	50	BSW	
245/45ZR18 XL	-	100	W	7	243	8J	677	300AA	800	1764	340	50	BSW	
245/40ZR18 XL	-	97	W	7	248	8 1/2J	653	300AA	730	1609	340	50	BSW	
235/60R18 XL	-	107	V	7.8	240	7J	739	300AA	975	2149	340	50	BSW	
235/55R18 XL	-	104	V	7.8	245	7 1/2J	715	300AA	900	1984	340	50	BSW	
235/50ZR18 XL	-	101	W	7	245	7 1/2J	693	300AA	825	1819	340	50	BSW	
235/45ZR18 XL	-	98	W	7	236	8J	669	300AA	750	1653	340	50	BSW	
235/40ZR18 XL	-	95	W	7	241	8 1/2J	645	300AA	690	1521	340	50	BSW	
225/60R18 XL	-	104	V	7.8	228	6 1/2J	727	300AA	900	1984	340	50	BSW	
225/55R18 XL	-	102	V	7	233	7J	705	300AA	850	1874	340	50	BSW	
225/45ZR18 XL	-	95	W	7	225	7 1/2J	659	300AA	690	1521	340	50	BSW	
225/40ZR18 XL	-	92	W	7	230	8J	637	300AA	630	1389	340	50	BSW	
215/55R18 XL	-	99	V	7.8	226	7J	693	300AA	775	1709	340	50	BSW	
215/45ZR18 XL	-	93	W	7	213	7J	651	300AA	650	1433	340	50	BSW	
215/35ZR18 XL	-	84	W	7	218	7 1/2J	607	300AA	500	1102	340	50	BSW	

The labeling information is subject to change without notice.

# ROYAL Performance

Service time

Economy

Maneuverability

Permissibility

Wear resistance

Safety



ECONOMY



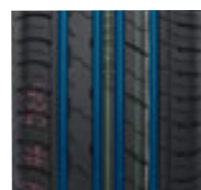
STABILITY



OIL



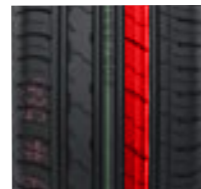
COMFORT



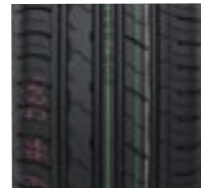
The intermediate continuous ribs.



The asymmetrical tread design.



Simple continuous pattern crown.



"Rim Protector" special design.

## ROYAL Performance M+S



D-C



C-B



B

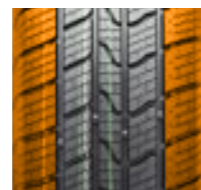
Size	PR	Loading Index	Speed Rating	Tread Depth (mm)	Inflatable Section Width(mm)	Standard Rim	Overall Diameter (mm)	UTQG	MAX Load Kg	Load IBS	MAX Pressure Kpa	MAX Pressure Psi	Sidewall Description
275/35ZR20 XL	-	102	W	7.8	278	9 1/2J	700	300AA	850	1874	340	50	BSW
285/45R19 XL	-	111	V	7.8	285	9 1/2J	739	300AA	1090	2403	340	50	BSW
245/50ZR18 XL	-	104	W	7	253	7 1/2J	703	300AA	900	1984	340	50	BSW
215/40ZR18 XL	-	89	W	7	218	7 1/2J	629	300AA	580	1279	340	50	BSW
225/60R17	-	99	V	7.8	228	6 1/2J	702	300AA	775	1709	300	44	BSW
195/45R15 XL	-	82	V	7	195	6 1/2J	557	300AA	475	1047	340	50	BSW

The labeling information is subject to change without notice.

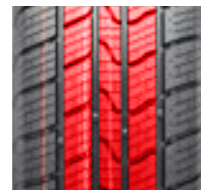
# ROYAL A/S



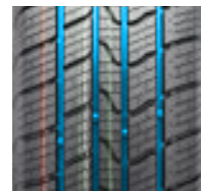
- Service time
- Economy
- Maneuverability
- Permissibility
- Wear resistance
- Safety



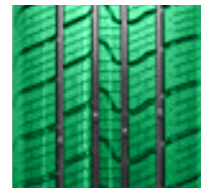
The compound mixture ensures longevity without compromising on safety and performance.



This unique design offers stability in cornering, it has superior performance due to its superior design where the ROYAL A/S provides performance as an all-rounder tyre, the ROYAL A/S provides superior performance in cornering on slippery conditions.



This design has a superior pitch frequency, which offers a considerable reduction in noise, offering a very comfortable and quiet ride.



Superior high tensile steel belts for durability, nylon blend cap to maximize the contact area with the road surface, all of these combined exceeds the goal of having a tyre which not only meets the needs of an exceptional all seasons tyre, but also provides exceptional performance.



4 SEASON



STABILITY



ECONOMY



WET

## ROYAL A/S M+S



	Size	PR	Loading Index	Speed Rating	Tread Depth (mm)	Inflatable Section Width(mm)	Standard Rim	Overall Diameter (mm)	UTQG	MAX Load Kg	1BS	MAX Pressure Kpa	Psi	Sidewall Description	
18	245/45ZR18 XL	-	100	Y	7.8	243	8J	677	420AA	800	1764	340	50	BSW	
	245/40ZR18 XL	-	97	Y	7.8	248	8 1/2J	653	420AA	730	1609	340	50	BSW	
	235/50R18 XL	-	101	W	7.8	245	7 1/2J	693	420AA	825	1819	340	50	BSW	
	225/55R18 XL	-	102	V	7.8	233	7J	705	420AA	850	1874	340	50	BSW	
	225/45R18 XL	-	95	W	7.8	225	7 1/2J	659	420AA	690	1521	340	50	BSW	
17	225/40ZR18 XL	-	92	Y	7.8	230	8J	637	420AA	630	1389	340	50	BSW	
	235/65R17 XL	-	108	V	7.8	240	7J	738	420AA	1000	2205	340	50	BSW	
	235/55R17 XL	-	103	W	7.8	245	7 1/2J	690	420AA	875	1929	340	50	BSW	
	235/45R17 XL	-	97	W	7.8	236	8J	644	420AA	730	1609	340	50	BSW	
	225/65R17 XL	-	106	V	7.8	228	6 1/2J	724	420AA	950	2094	340	50	BSW	
	225/60R17 XL	-	103	V	7.8	228	6 1/2J	702	420AA	875	1929	340	50	BSW	
	225/55R17 XL	-	101	W	7.8	233	7J	680	420AA	825	1819	340	50	BSW	
	225/50R17 XL	-	98	W	7.8	233	7J	658	420AA	750	1653	340	50	BSW	
	225/45R17 XL	-	94	W	7.8	225	7 1/2J	634	420AA	670	1477	340	50	BSW	
	215/60R17 XL	-	100	V	7.8	221	6 1/2J	690	420AA	800	1764	340	50	BSW	
	215/55R17 XL	-	98	W	7.8	226	7J	668	420AA	750	1653	340	50	BSW	
	215/50R17 XL	-	95	W	7.8	226	7J	648	420AA	690	1521	340	50	BSW	
	215/45R17 XL	-	91	W	7.8	213	7J	626	420AA	615	1356	340	50	BSW	
	205/50R17 XL	-	93	W	7.8	214	6 1/2J	638	420AA	650	1433	340	50	BSW	
	205/45R17 XL	-	88	W	7.8	206	7J	616	420AA	560	1235	340	50	BSW	
16	225/55R16 XL	-	99	W	7.8	233	7J	654	420AA	775	1709	340	50	BSW	
	215/70R16	-	100	H	7.8	221	6 1/2J	708	420AA	800	1764	300	44	BSW	
	215/65R16 XL	-	102	H	7.8	221	6 1/2J	686	420AA	850	1874	340	50	BSW	
	215/60R16 XL	-	99	H	7.8	221	6 1/2J	664	420AA	775	1709	340	50	BSW	
	215/55R16 XL	-	97	V	7.8	226	7J	642	420AA	730	1609	340	50	BSW	
	215/45R16 XL	-	90	V	7.8	213	7J	600	420AA	600	1323	340	50	BSW	
	205/60R16 XL	-	96	H	7.8	209	6J	652	420AA	710	1565	340	50	BSW	
	205/55R16 XL	-	94	V	7.8	214	6 1/2J	632	420AA	670	1477	340	50	BSW	
	205/45R16 XL	-	87	W	7.8	206	7J	590	420AA	545	1201	340	50	BSW	
	195/55R16 XL	-	91	V	7.8	201	6J	620	420AA	615	1356	340	50	BSW	
	195/50R16 XL	-	88	V	7.8	201	6J	602	420AA	560	1235	340	50	BSW	
	195/45R16 XL	-	84	V	7.8	195	6 1/2J	582	420AA	500	1102	340	50	BSW	
	215/65R15	-	96	H	7.8	221	6 1/2J	661	420AA	710	1565	300	44	BSW	
	205/65R15	-	94	V	7.8	209	6J	647	420AA	670	1477	300	44	BSW	
	195/65R15 XL	-	95	H	7.8	201	6J	635	420AA	690	1521	340	50	BSW	
15	195/65R15	-	91	H	7.8	201	6J	635	420AA	615	1356	300	44	BSW	
	195/60R15	-	88	H	7.8	201	6J	615	420AA	560	1235	300	44	BSW	
	195/55R15	-	85	V	7.8	201	6J	595	420AA	515	1135	300	44	BSW	
	195/50R15	-	82	V	7.8	201	6J	577	420AA	475	1047	300	44	BSW	
	185/65R15 XL	-	92	T	7.8	189	5 1/2J	621	420AA	630	1389	340	50	BSW	
	185/65R15	-	88	H	7.8	189	5 1/2J	621	420AA	560	1235	300	44	BSW	
	185/60R15 XL	-	88	H	7.8	189	5 1/2J	603	420AA	560	1235	340	50	BSW	
	185/60R15	-	84	H	7.8	189	5 1/2J	603	420AA	500	1102	300	44	BSW	
	185/55R15	-	82	V	7.8	194	6J	585	420AA	475	1047	300	44	BSW	
	175/65R15 XL	-	88	T	7.6	177	5J	609	420AA	560	1235	340	50	BSW	
	175/65R15	-	84	H	7.6	177	5J	609	420AA	500	1102	300	44	BSW	
	175/60R15	-	81	H	7.6	177	5J	591	420AA	462	1019	300	44	BSW	
	175/55R15	-	77	H	7.8	182	5 1/2J	573	420AA	412	908	300	44	BSW	
	14	185/70R14	-	88	H	7.8	189	5 1/2J	616	420AA	560	1235	300	44	BSW
		185/65R14	-	86	H	7.8	189	5 1/2J	596	420AA	530	1168	300	44	BSW
185/60R14		-	82	H	7.8	189	5 1/2J	578	420AA	475	1047	300	44	BSW	
185/55R14		-	80	H	7.8	194	6J	560	420AA	450	992	300	44	BSW	
175/70R14 XL		-	88	T	7.6	177	5J	602	420AA	560	1235	340	50	BSW	
175/70R14		-	84	H	7.6	177	5J	602	420AA	500	1102	300	44	BSW	
175/65R14 XL		-	86	T	7.6	177	5J	584	420AA	530	1168	340	50	BSW	
175/65R14		-	82	H	7.6	177	5J	584	420AA	475	1047	300	44	BSW	
165/70R14		-	81	H	7.6	170	5J	588	420AA	462	1019	300	44	BSW	
165/65R14		-	79	H	7.6	170	5J	570	420AA	437	963	300	44	BSW	
165/60R14		-	75	H	7.6	170	5J	554	420AA	387	853	300	44	BSW	
155/65R14		-	75	H	7.6	157	4 1/2J	558	420AA	387	853	300	44	BSW	
13		175/70R13	-	82	T	7.6	177	5.00B	576	420AA	475	1047	300	44	BSW
		175/65R13	-	80	T	7.6	177	5.00B	558	420AA	450	992	300	44	BSW
		165/70R13	-	79	T	7.6	170	5.00B	562	420AA	437	963	300	44	BSW
	155/80R13	-	79	T	7.6	157	4.50B	578	420AB	437	963	300	44	BSW	
	155/70R13	-	75	T	7.6	157	4.50B	548	420AA	387	853	300	44	BSW	
	155/65R13	-	73	T	7.6	157	4.50B	532	420AA	365	805	300	44	BSW	

The labeling information is subject to change without notice.

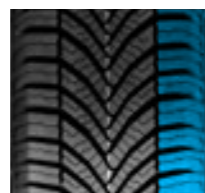
# ROYAL A/S II



- Service time
- Economy
- Maneuverability
- Permissibility
- Wear resistance
- Safety



Rigid pattern block provides superior handling performance:  
The pattern block is coherent, and the width is uniform, which ensures the rigidity of the tread to the maximum extent, brings super handling performance, and meets the driving needs of high-end cars.



Reduce noise:  
The narrow pitch design is adopted, and the pitch arrangement is analyzed and optimized by AI to reduce the noise resonance phenomenon of pattern blocks, making the driving process more quiet and comfortable.



Three-stage main channel design:  
The inclination angle is constantly changing, the drainage performance is better, and the wet skid resistance is improved, providing safety guarantee for driving in rainy and snowy weather.



Precise control of driving:  
High-density 3D steel sheet design increases the strength of the pattern and can easily cope with rain and snow environment, providing you with extraordinary grip on the road.



4 SEASON



STABILITY



ECONOMY



WET

## ROYAL A/S II M+S



	Size	PR	Loading Index	Speed Rating	Tread Depth (mm)	Inflatable Section Width(mm)	Standard Rim	Overall Diameter (mm)	UTQG	MAX Load Kg	MAX Load IBS	MAX Pressure Kpa	MAX Pressure Psi	Sidewall Description
18	245/45ZR18 XL	-	100	Y	7.8	243	8J	677	420AA	800	1764	340	50	BSW
	245/40ZR18 XL	-	97	Y	7.8	248	8 1/2J	653	420AA	730	1609	340	50	BSW
	235/50R18 XL	-	101	W	7.8	245	7 1/2J	693	420AA	825	1819	340	50	BSW
	225/55R18 XL	-	102	V	7.8	233	7J	705	420AA	850	1874	340	50	BSW
	225/45R18 XL	-	95	W	7.8	225	7 1/2J	659	420AA	690	1521	340	50	BSW
17	225/40ZR18 XL	-	92	Y	7.8	230	8J	637	420AA	630	1389	340	50	BSW
	235/65R17 XL	-	108	V	7.8	240	7J	738	420AA	1000	2205	340	50	BSW
	235/55R17 XL	-	103	W	7.8	245	7 1/2J	690	420AA	875	1929	340	50	BSW
	235/45R17 XL	-	97	W	7.8	236	8J	644	420AA	730	1609	340	50	BSW
	225/65R17 XL	-	106	V	7.8	228	6 1/2J	724	420AA	950	2094	340	50	BSW
	225/60R17 XL	-	103	V	7.8	228	6 1/2J	702	420AA	875	1929	340	50	BSW
	225/55R17 XL	-	101	W	7.8	233	7J	680	420AA	825	1819	340	50	BSW
	225/50R17 XL	-	98	W	7.8	233	7J	658	420AA	750	1653	340	50	BSW
	225/45R17 XL	-	94	W	7.8	225	7 1/2J	634	420AA	670	1477	340	50	BSW
	215/60R17 XL	-	100	V	7.8	221	6 1/2J	690	420AA	800	1764	340	50	BSW
16	215/55R17 XL	-	98	W	7.8	226	7J	668	420AA	750	1653	340	50	BSW
	215/50R17 XL	-	95	W	7.8	226	7J	648	420AA	690	1521	340	50	BSW
	215/45R17 XL	-	91	W	7.8	213	7J	626	420AA	615	1356	340	50	BSW
	205/50R17 XL	-	93	W	7.8	214	6 1/2J	638	420AA	650	1433	340	50	BSW
	205/45R17 XL	-	88	W	7.8	206	7J	616	420AA	560	1235	340	50	BSW
	225/55R16 XL	-	99	W	7.8	233	7J	654	420AA	775	1709	340	50	BSW
	215/70R16	-	100	H	7.8	221	6 1/2J	708	420AA	800	1764	300	44	BSW
	215/65R16 XL	-	102	H	7.8	221	6 1/2J	686	420AA	850	1874	340	50	BSW
	215/60R16 XL	-	99	H	7.8	221	6 1/2J	664	420AA	775	1709	340	50	BSW
	215/55R16 XL	-	97	V	7.8	226	7J	642	420AA	730	1609	340	50	BSW
15	215/45R16 XL	-	90	V	7.8	213	7J	600	420AA	600	1323	340	50	BSW
	205/60R16 XL	-	96	H	7.8	209	6J	652	420AA	710	1565	340	50	BSW
	205/55R16 XL	-	94	V	7.8	214	6 1/2J	632	420AA	670	1477	340	50	BSW
	205/45R16 XL	-	87	W	7.8	206	7J	590	420AA	545	1201	340	50	BSW
	195/55R16 XL	-	91	V	7.8	201	6J	620	420AA	615	1356	340	50	BSW
	195/50R16 XL	-	88	V	7.8	201	6J	602	420AA	560	1235	340	50	BSW
	195/45R16 XL	-	84	V	7.8	195	6 1/2J	582	420AA	500	1102	340	50	BSW
	215/65R15	-	96	H	7.8	221	6 1/2J	661	420AA	710	1565	300	44	BSW
	205/65R15	-	94	V	7.8	209	6J	647	420AA	670	1477	300	44	BSW
	195/65R15 XL	-	95	H	7.8	201	6J	635	420AA	690	1521	340	50	BSW
14	195/65R15	-	91	H	7.8	201	6J	635	420AA	615	1356	300	44	BSW
	195/60R15	-	88	H	7.8	201	6J	615	420AA	560	1235	300	44	BSW
	195/55R15	-	85	V	7.8	201	6J	595	420AA	515	1135	300	44	BSW
	195/50R15	-	82	V	7.8	201	6J	577	420AA	475	1047	300	44	BSW
	185/65R15 XL	-	92	T	7.8	189	5 1/2J	621	420AA	630	1389	340	50	BSW
	185/65R15	-	88	H	7.8	189	5 1/2J	621	420AA	560	1235	300	44	BSW
	185/60R15 XL	-	88	H	7.8	189	5 1/2J	603	420AA	560	1235	340	50	BSW
	185/60R15	-	84	H	7.8	189	5 1/2J	603	420AA	500	1102	300	44	BSW
	185/55R15	-	82	V	7.8	194	6J	585	420AA	475	1047	300	44	BSW
	175/65R15 XL	-	88	T	7.6	177	5J	609	420AA	560	1235	340	50	BSW
13	175/65R15	-	84	H	7.6	177	5J	609	420AA	500	1102	300	44	BSW
	175/60R15	-	81	H	7.6	177	5J	591	420AA	462	1019	300	44	BSW
	175/55R15	-	77	H	7.8	182	5 1/2J	573	420AA	412	908	300	44	BSW
	185/70R14	-	88	H	7.8	189	5 1/2J	616	420AA	560	1235	300	44	BSW
	185/65R14	-	86	H	7.8	189	5 1/2J	596	420AA	530	1168	300	44	BSW
	185/60R14	-	82	H	7.8	189	5 1/2J	578	420AA	475	1047	300	44	BSW
	185/55R14	-	80	H	7.8	194	6J	560	420AA	450	992	300	44	BSW
	175/70R14 XL	-	88	T	7.6	177	5J	602	420AA	560	1235	340	50	BSW
	175/70R14	-	84	H	7.6	177	5J	602	420AA	500	1102	300	44	BSW
	175/65R14 XL	-	86	T	7.6	177	5J	584	420AA	530	1168	340	50	BSW
12	175/65R14	-	82	H	7.6	177	5J	584	420AA	475	1047	300	44	BSW
	165/70R14	-	81	H	7.6	170	5J	588	420AA	462	1019	300	44	BSW
	165/65R14	-	79	H	7.6	170	5J	570	420AA	437	963	300	44	BSW
	165/60R14	-	75	H	7.6	170	5J	554	420AA	387	853	300	44	BSW
	155/65R14	-	75	H	7.6	157	4 1/2J	558	420AA	387	853	300	44	BSW
	175/70R13	-	82	T	7.6	177	5.00B	576	420AA	475	1047	300	44	BSW
	175/65R13	-	80	T	7.6	177	5.00B	558	420AA	450	992	300	44	BSW
	165/70R13	-	79	T	7.6	170	5.00B	562	420AA	437	963	300	44	BSW
	155/80R13	-	79	T	7.6	157	4.50B	578	420AB	437	963	300	44	BSW
	155/70R13	-	75	T	7.6	157	4.50B	548	420AA	387	853	300	44	BSW
155/65R13	-	73	T	7.6	157	4.50B	532	420AA	365	805	300	44	BSW	

The labeling information is subject to change without notice.

# ROYAL VAN A/S

- Service time
- Economy
- Maneuverability
- Permissibility
- Wear resistance
- Safety



STABILITY



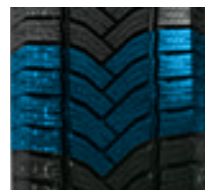
SILENCE



OIL



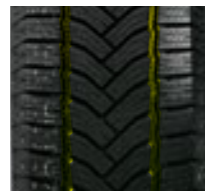
WET



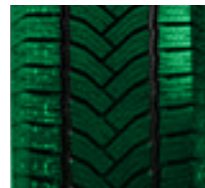
Reliability in all weather conditions:  
The large V-shaped single-guide pattern design can ensure stable and reliable performance even on gravel, mud, grass and snow, and solve your worries on the road.



High carrying capacity:  
The new 3D steel sheet adopts the "two bends and straight" horizontal layout to ensure the strength of the pattern block under the conditions of high load and high wear, and improve durability and safety.



Handles slippery and snowy surfaces easily:  
Two wide Z-shaped vertical trenches to ensure smooth drainage in rainy days, dense small trenches, can effectively puncture the water film and easily deal with rainwater and snow-covered roads.



Super wear-resistant formula:  
Specially developed new four-season wear-resistant formula, effectively improve the service life of tires, bring you considerable economic benefits.

## ROYAL VAN A/S M+S



	Size	PR	Loading Index	Speed Rating	Tread Depth (mm)	Inflatable Section Width(mm)	Standard Rim	Overall Diameter (mm)	UTQG	MAX Load Kg	IBS	MAX Pressure Kpa	MAX Pressure Psi	Sidewall Description
17	225/55R17C	8PR	109/107	H	8.6	233	7J	680	-	1030/975	2270/2150	475	69	BSW
	215/60R17C	8PR	109/107	T	8.6	221	6 1/2J	690	-	1030/975	2270/2150	475	69	BSW
16	235/65R16C	8PR	115/113	R	8.6	240	7J	712	-	1215/1150	2680/2535	475	70	BSW
	225/75R16C	10PR	121/120	R	8.6	223	6J	744	-	1450/1400	3195/3085	575	85	BSW
	225/65R16C	8PR	112/110	R	8.6	228	6 1/2J	698	-	1120/1060	2470/2335	475	69	BSW
	215/75R16C	8PR	113/111	R	8.6	216	6J	728	-	1150/1090	2535/2405	475	69	BSW
	215/65R16C	8PR	109/107	T	8.6	221	6 1/2J	686	-	1030/975	2270/2150	475	69	BSW
	215/60R16C	6PR	103/101	T	8.6	221	6 1/2J	664	-	875/825	1930/1820	375	55	BSW
	205/75R16C	10PR	113/111	R	8.6	203	5 1/2J	714	-	1150/1090	2535/2405	525	75	BSW
	205/65R16C	8PR	107/105	T	8.6	209	6J	672	-	975/925	2150/2040	475	69	BSW
	195/75R16C	10PR	110/108	T	8.3	196	5 1/2J	698	-	1060/1000	2335/2205	525	75	BSW
	195/75R16C	8PR	107/105	R	8.3	196	5 1/2J	698	-	975/925	2150/2040	475	69	BSW
15	195/65R16C	8PR	104/102	T	8.3	201	6J	660	-	900/850	1985/1875	475	69	BSW
	195/60R16C	6PR	99/97	H	8.3	201	6J	640	-	775/730	1710/1610	375	55	BSW
	185/75R16C	8PR	104/102	R	8.3	184	5J	684	-	900/850	1985/1875	475	69	BSW
	225/70R15C	8PR	112/110	R	8.6	228	6 1/2J	697	-	1120/1060	2470/2335	450	65	BSW
	215/70R15C	8PR	109/107	R	8.6	221	6 1/2J	683	-	1030/975	2270/2150	450	65	BSW
	215/65R15C	6PR	104/102	T	8.6	221	6 1/2J	661	-	900/850	1985/1875	375	55	BSW
	205/70R15C	8PR	106/104	R	8.6	209	6J	669	-	950/900	2095/1985	450	65	BSW
	195/70R15C	8PR	104/102	R	8.3	201	6J	655	-	900/850	1985/1875	450	65	BSW
	175/70R14C	6PR	95/93	T	8.0	177	5J	602	-	690/650	1520/1435	375	55	BSW
	175/65R14C	6PR	90/88	T	8.0	177	5J	584	-	600/560	1325/1235	375	55	BSW

The labeling information is subject to change without notice.

# ROYAL Sport

- Service time
- Economy
- Maneuverability
- Permissibility
- Wear resistance
- Safety



- COMFORT
- SILENCE
- DRAINAGE
- WET

- To provide the necessary high-speed performance and ensure excellent drainage properties.
- Provide excellent grip performance, but also suitable for snow with.
- Manipulate both reliable and durable.
- To provide excellent wear resistance and high-speed performance.

## ROYAL Sport M+S



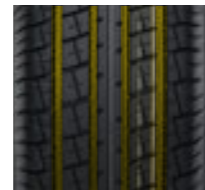
	Size	PR	Loading Index	Speed Rating	Tread Depth (mm)	Inflatable Section Width(mm)	Standard Rim	Overall Diameter (mm)	UTQG	MAX Load Kg	MAX Load IBS	MAX Pressure Kpa	MAX Pressure Psi	Sidewall Description
20	285/50R20 XL	-	116	V	7.8	297	9J	794	420AA	1250	2756	340	50	BSW
	275/55R20 XL	-	117	V	7.8	284	8 1/2J	810	420AA	1285	2833	340	50	BSW
	265/50R20 XL	-	111	V	7.8	277	8 1/2J	774	420AA	1090	2403	340	50	BSW
18	255/50R20 XL	-	109	V	7.8	265	8J	764	420AA	1030	2271	340	50	BSW
	285/60R18 XL	-	120	H	8.2	292	8 1/2J	799	420AA	1400	3086	340	50	BSW
	275/65R18	-	116	H	8.2	279	8J	815	420AA	1250	2756	300	44	BSW
	265/70R18	-	116	H	8.2	272	8J	829	420AA	1250	2756	300	44	BSW
	265/60R18 XL	-	114	H	8.2	272	8J	775	420AA	1180	2601	340	50	BSW
	255/70R18	-	113	H	8.2	260	7 1/2J	815	420AA	1150	2535	300	44	BSW
	255/60R18 XL	-	112	H	7.8	260	7 1/2J	763	420AA	1120	2469	340	50	BSW
	245/60R18	-	105	H	8.2	248	7J	751	420AA	925	2039	300	44	BSW
	235/65R18 XL	-	110	H	8.2	240	7J	763	420AA	1060	2337	340	50	BSW
	235/55R18 XL	-	104	H	8.2	245	7 1/2J	715	420AA	900	1984	340	50	BSW
17	225/60R18 XL	-	104	H	8.2	228	6 1/2J	727	420AA	900	1984	340	50	BSW
	225/55R18	-	98	H	8.2	233	7J	705	420AA	750	1653	300	44	BSW
	285/65R17	-	116	H	8.2	292	8 1/2J	802	420AA	1250	2756	300	44	BSW
	275/65R17	-	115	H	8.2	279	8J	790	420AA	1215	2679	300	44	BSW
	265/70R17	-	115	H	8.2	272	8J	804	420AA	1215	2679	300	44	BSW
	265/65R17	-	112	H	8.2	272	8J	776	420AA	1120	2469	300	44	BSW
	255/65R17	-	110	H	8.2	260	7 1/2J	764	420AA	1060	2337	300	44	BSW
	245/65R17	-	107	H	8.2	248	7J	750	420AA	975	2149	300	44	BSW
	235/65R17	-	104	H	8.2	240	7J	738	420AA	900	1984	300	44	BSW
	235/60R17	-	102	H	8.2	240	7J	714	420AA	850	1874	300	44	BSW
	225/65R17	-	102	H	8.2	228	6 1/2J	724	420AA	850	1874	300	44	BSW
	225/60R17	-	99	H	8.2	228	6 1/2J	702	420AA	775	1709	300	44	BSW
16	215/65R17	-	99	H	8.2	221	6 1/2J	712	420AA	775	1709	300	44	BSW
	215/60R17	-	96	H	8.2	221	6 1/2J	690	420AA	710	1565	300	44	BSW
	275/70R16	-	114	H	8.2	279	8J	792	420AA	1180	2601	300	44	BSW
	265/70R16	-	112	H	8.2	272	8J	778	420AA	1120	2469	300	44	BSW
	255/70R16	-	111	H	8.2	260	7 1/2J	764	420AA	1090	2403	300	44	BSW
	255/65R16	-	109	H	8.2	260	7 1/2J	738	420AA	1030	2271	300	44	BSW
	245/70R16	-	107	H	8.2	248	7J	750	420AA	975	2149	300	44	BSW
235/70R16	-	106	H	8.2	240	7J	736	420AA	950	2094	300	44	BSW	
225/70R16	-	103	H	8.2	228	6 1/2J	722	420AA	875	1929	300	44	BSW	
215/70R16	-	100	H	8.2	221	6 1/2J	708	420AA	800	1764	300	44	BSW	

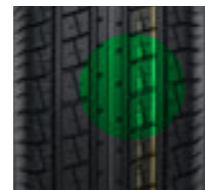
The labeling information is subject to change without notice.

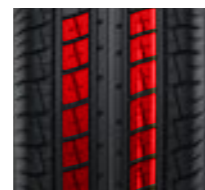
# ROYAL Prime

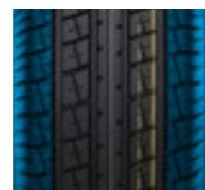
- Service time
- Economy
- Maneuverability
- Permissibility
- Wear resistance
- Safety



- 

Four main grooves provide good driving stability and wet performance.
- 

Reasonable pattern area, perfect collocation of every grooves.
- 

Special tread compound, ensure tire performance stability in all kinds of weather conditions.
- 

White sidewall rib shows extraordinary appearance.



STABILITY



4 SEASON



GOOD DESIGN



WET

## ROYAL Prime M+S



Size	PR	Loading Index	Speed Rating	Tread Depth (mm)	Inflatable Section Width(mm)	Standard Rim	Overall Diameter (mm)	UTQG	MAX Load		MAX Pressure		Sidewall Description
									Kg	lbs	Kpa	Psi	
15 P235/75R15	-	105	S	8.2	235	6 1/2J	733	420AB	920	2028	300	44	BSW
P225/75R15	-	102	T	7.9	223	6J	719	420AB	850	1874	300	44	BSW
P225/70R15	-	100	T	7.9	228	6 1/2J	697	420AB	795	1753	300	44	BSW
P215/75R15	-	100	T	8.2	216	6J	703	420AB	790	1742	300	44	BSW
P205/75R15	-	97	T	7.9	203	5 1/2J	689	420AB	725	1598	300	44	BSW
P205/70R15	-	95	S	7.8	209	6J	669	420AB	680	1499	300	44	BSW
14 P205/75R14	-	95	S	7.8	203	5 1/2J	664	420AB	695	1532	300	44	BSW
P195/75R14	-	92	S	7.8	196	5 1/2J	648	420AB	635	1400	300	44	BSW

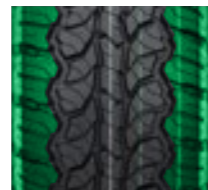
The labeling information is subject to change without notice.

# ROYAL A/T

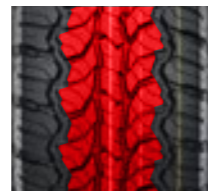
- Service time
- Economy
- Maneuverability
- Permissibility
- Wear resistance
- Safety



Four main zigzag grooves and rough lateral blocks provide excellent traction on all kind of road conditions.



The open shoulder grooves prevent aquaplaning with enhanced wet grip performance and provide excellent water evacuation. The white letter styling provide a artistic image.



The block tread design with multiple-sipes provide outstanding off-road traction and reduce tread damage on off-road condition.



Jointless Nylon band and strong structure design provided the strong carcass to enhance the reliability and durability. Special tread compound and wide footprint enhance tread life and deliver excellent braking on wet and dry roads.



COMFORT



HIGH PERFORMANCE



STABILITY



DRAINAGE

## ROYAL A/T M+S



	Size	PR	Loading Index	Speed Rating	Tread Depth (mm)	Inflatable Section Width(mm)	Standard Rim	Overall Diameter (mm)	UTQG	MAX Load Kg	MAX Load IBS	MAX Pressure Kpa	MAX Pressure Psi	Sidewall Description
20	P275/60R20 XL	-	119	T	8.7	279	8J	838	500AB	1360	2998	340	50	BSW
18	P275/55R20 XL	-	117	T	8.7	284	8 1/2J	810	500AB	1285	2833	340	50	BSW
	LT275/70R18	-	125/122	S	11.2	279	8J	843	-	1650/1500	3640/3305	550	80	BSW
17	LT275/65R18	-	123/120	S	11.2	279	8J	815	-	1550/1400	3415/3085	550	80	BSW
	P275/65R17	-	115	T	9.2	279	8J	790	500AB	1215	2679	300	44	BSW
	P265/70R17	-	115	T	9	272	8J	804	500AB	1215	2679	300	44	BSW
	P265/70R17	-	113	T	9.2	272	8J	804	500AB	1150	2535	300	44	BSW
	LT265/70R17	-	121/118	S	11.7	272	8J	804	-	1450/1320	3195/2910	550	80	BSW
	P265/65R17	-	110	T	8.7	272	8J	776	500AB	1060	2337	300	44	BSW
	P265/65R17	-	112	T	8.7	272	8J	776	500AB	1120	2469	300	44	BSW
	LT245/75R17	-	121/118	S	11.2	248	7J	800	-	1450/1320	3195/2910	550	80	BSW
	P245/65R17	-	107	T	8.8	248	7J	750	500AB	975	2149	300	44	BSW
	P255/65R17	-	110	T	8.7	260	7 1/2J	764	500AB	1060	2337	300	44	BSW
	P235/65R17	-	104	T	8.8	240	7J	738	500AB	900	1984	300	44	BSW
16	225/70R17 XL	-	108	Q	8.7	228	6 1/2J	748	500AB	1000	2205	340	50	BSW
	LT285/75R16	-	122/119	S	11.6	286	8J	834	-	1500/1360	3305/3000	450	65	BSW
	P275/70R16	-	114	T	9.2	279	8J	792	500AB	1180	2601	300	44	BSW
	LT265/75R16	-	123/120	S	11.7	267	7 1/2J	804	-	1550/1400	3415/3085	550	80	BSW
	P265/70R16	-	112	T	9.2	272	8J	778	500AB	1120	2469	300	44	BSW
	P265/70R16	-	111	T	9.2	272	8J	778	500AB	1090	2403	300	44	BSW
	P255/70R16	-	109	T	9.2	260	7 1/2J	764	500AB	1030	2271	300	44	BSW
	P255/70R16	-	111	T	9.2	260	7 1/2J	764	500AB	1090	2403	300	44	BSW
	LT245/75R16	-	120/116	S	11.2	248	7J	774	-	1380/1260	3042/2778	550	80	BSW
	P245/70R16 XL	-	111	S	8.8	248	7J	750	500AB	1090	2403	340	50	BSW
	P245/70R16	-	107	T	8.8	248	7J	750	500AB	975	2149	300	44	BSW
	P245/70R16	-	106	T	8.8	248	7J	750	500AB	950	2094	300	44	BSW
	LT235/85R16	-	120/116	S	11.7	235	6 1/2J	806	-	1380/1260	3042/2778	550	80	BSW
	P235/70R16	-	104	T	8.8	240	7J	736	500AB	900	1984	300	44	BSW
	P235/70R16	-	106	T	8.8	240	7J	736	500AB	950	2094	300	44	BSW
	LT225/75R16	-	115/112	S	11.2	223	6J	744	-	1215/1120	2680/2470	550	80	BSW
	P225/70R16	-	103	T	8.2	228	6 1/2J	722	500AB	875	1929	300	44	BSW
	P225/70R16	-	101	T	8.2	228	6 1/2J	722	500AB	825	1819	300	44	BSW
	LT215/85R16	-	115/112	S	10.9	216	6J	772	-	1215/1120	2680/2470	550	80	BSW
	P215/70R16	-	100	T	8.2	221	6 1/2J	708	500AB	800	1764	300	44	BSW
	P215/70R16	-	99	T	8.2	221	6 1/2J	708	500AB	775	1709	300	44	BSW
	205R16C	-	110/108	S	8.2	208	6J	736	-	1060/1000	2335/2205	450	65	BSW
15	185/75R16C	-	104/102	S	8.1	184	5J	684	-	900/850	1985/1875	450	65	BSW
	31x10.50R15LT	-	109	S	11.7	268	8 1/2J	775	-	1030	2270	350	51	BSW
	P265/70R15	-	112	T	9.2	272	8J	753	500AB	1120	2469	300	44	BSW
	255/70R15C	-	112/110	S	8.2	260	7 1/2J	739	-	1120/1060	2470/2335	375	55	BSW
	245/75R15C	-	109/107	S	11.2	248	7J	749	-	1030/975	2270/2150	375	55	BSW
	P235/75R15 XL	-	109	S	8.7	235	6 1/2J	733	500AB	1030	2271	340	50	BSW
	LT235/75R15	-	104/101	S	11.2	235	6 1/2J	733	-	900/825	1985/1820	350	50	BSW
	P225/75R15	-	102	T	8.2	223	6J	719	500AB	850	1874	300	44	BSW
	P215/75R15	-	100	T	8.2	216	6J	703	500AB	800	1764	300	44	BSW
	215/70R15C	-	109/107	R	8.2	221	6 1/2J	683	-	1030/975	2270/2150	450	65	BSW
	215R15C	-	112/110	S	8.7	218	6J	725	-	1120/1060	2470/2337	450	65	BSW
	P205/75R15	-	97	T	8.2	203	5 1/2J	689	500AB	725	1598	300	44	BSW

The labeling information is subject to change without notice.

# ROYAL SPIDER RT SPIDER-RT

- Service time
- Economy
- Maneuverability
- Permissibility
- Wear resistance
- Safety





**STAGGERED SHOULDER LUGS:**  
Provides traction in off-road environments.



**Slingstone structure:**  
Protect the bottom of groove from sharp



**STEP BLOCK EDGE:**  
Step block edge provide additional biting edges for more traction.



**Shoulder and block design:**  
Shoulder grooves are arranged in alternating widths and lengths to clear mud and maintain traction. Irregular block provide more traction on different road condition.



- 4 SEASON
- DRAINAGE
- BRAKING
- STABILITY

## ROYAL SPIDER RT M+S

	Size	PR	Loading Index	Speed Rating	Tread Depth (mm)	Inflatable Section Width(mm)	Standard Rim	Overall Diameter (mm)	UTQG	MAX Load Kg	MAX Load IBS	MAX Pressure Kpa	MAX Pressure Psi	Sidewall Description
20	LT285/50R20(POR)	10PR	119/116	Q	11.0	297	9J	794	-	1360/1250	3000/2755	550	80	BSW
	LT275/55R20(POR)	10PR	120/117	Q	11.0	284	8 1/2J	810	-	1400/1285	3085/2835	550	80	BSW
	LT265/60R20(POR)	10PR	121/118	Q	11.0	272	8J	826	-	1450/1320	3195/2910	550	80	BSW
	LT265/50R20(POR)	10PR	115/112	Q	11.0	277	8 1/2J	774	-	1215/1120	2680/2470	550	80	BSW
19	255/55R19 XL(POR)	-	111	Q	11.0	265	8J	763	-	1090	2403	340	50	BSW
18	35x12.50R18LT	10PR	123	Q	13.0	318	10J	883	-	1550	3415	450	65	BSW
	33x12.50R18LT(POR)	10PR	118	Q	13.0	318	10J	826	-	1320	2910	450	65	BSW
	LT275/65R18	10PR	123/120	Q	11.0	279	8J	815	-	1550/1400	3415/3085	550	80	BSW
	LT265/70R18	10PR	124/121	Q	11.0	272	8J	829	-	1600/1450	3525/3195	550	80	BSW
	LT265/65R18	10PR	122/119	Q	11.0	272	8J	801	-	1500/1360	3305/3000	550	80	BSW
	LT255/55R18(POR)	8PR	109/105	Q	11.0	265	8J	737	-	1030/925	2270/2040	450	65	BSW
17	33x12.50R17LT(POR)	10PR	120	Q	13.0	318	10J	826	-	1400	3085	450	65	BSW
	LT315/70R17(POR)	10PR	121/118	Q	11.0	323	9 1/2J	874	-	1450/1320	3195/2910	450	65	BSW
	LT285/70R17(POR)	10PR	121/118	Q	11.0	292	8 1/2J	832	-	1450/1320	3195/2910	550	80	BSW
	LT265/70R17(POR)	10PR	121/118	Q	11.0	272	8J	804	-	1450/1320	3195/2910	550	80	BSW
	LT255/65R17(POR)	8PR	114/110	Q	11.0	260	7 1/2J	764	-	1180/1060	2600/2335	450	65	BSW
	LT245/70R17(POR)	10PR	119/116	Q	11.0	248	7J	776	-	1360/1250	3000/2755	550	80	BSW
	LT245/65R17(POR)	10PR	117/114	Q	11.0	248	7J	750	-	1285/1180	2835/2600	550	80	BSW
	LT225/70R17(POR)	8PR	110/107	Q	11.0	228	6 1/2J	748	-	1060/975	2335/2150	450	65	BSW
	LT225/65R17(POR)	8PR	107/103	Q	11.0	228	6 1/2J	724	-	975/875	2150/1930	450	65	BSW
16	LT305/70R16	10PR	124/121	Q	11.0	311	9J	834	-	1600/1450	3525/3195	450	65	BSW
	LT285/75R16	10PR	126/123	Q	11.0	286	8J	834	-	1700/1550	3750/3415	550	80	BSW
	LT275/70R16(POR)	8PR	119/116	Q	11.0	279	8J	792	-	1360/1250	3000/2755	450	65	BSW
	LT265/75R16	10PR	123/120	Q	11.0	267	7 1/2J	804	-	1550/1400	3415/3085	550	80	BSW
	LT265/70R16(POR)	10PR	121/118	Q	11.0	272	8J	778	-	1450/1320	3195/2910	550	80	BSW
	LT255/70R16(POR)	10PR	120/117	Q	11.0	260	7 1/2J	764	-	1400/1285	3085/2835	550	80	BSW
	LT245/75R16(POR)	10PR	120/116	Q	11.0	248	7J	774	-	1380/1260	3042/2778	550	80	BSW
	LT245/70R16(POR)	8PR	113/110	Q	11.0	248	7J	750	-	1150/1060	2535/2335	450	65	BSW
	LT235/85R16(POR)	10PR	120/116	Q	11.0	235	6 1/2J	806	-	1380/1260	3042/2778	550	80	BSW
	LT235/75R15(POR)	8PR	110/107	Q	11.0	235	6 1/2J	733	-	1060/975	2335/2150	450	65	BSW
	LT225/75R16(POR)	10PR	115/112	Q	11.0	223	6J	744	-	1215/1120	2680/2470	550	80	BSW
	LT215/70R16(POR)	6PR	100/97	Q	11.0	221	6 1/2J	708	-	800/730	1765/1610	350	50	BSW
15	31x10.50R15LT(POR)	6PR	109	Q	13.0	268	8 1/2J	775	-	1030	2270	350	50	BSW

The labeling information is subject to change without notice.

## ROYAL SPIDER-RT M+S

	Size	PR	Loading Index	Speed Rating	Tread Depth (mm)	Inflatable Section Width(mm)	Standard Rim	Overall Diameter (mm)	UTQG	MAX Load Kg	MAX Load IBS	MAX Pressure Kpa	MAX Pressure Psi	Sidewall Description
22	33x12.50R22LT	10PR	109	Q	13.1	318	10.0J	826	-	1030	2270	450	65	BSW
20	35x12.50R22LT	10PR	117	Q	13.1	318	10.0J	877	-	1285	2835	450	65	BSW
	33x12.50R20LT	10PR	114	Q	13.1	318	10.0J	826	-	1180	2600	450	65	BSW
	35x12.50R20LT	10PR	121	Q	13.1	318	10.0J	877	-	1450	3195	450	65	BSW
18	LT265/60R18	10PR	119/116	S	11	272	8J	775	-	1360/1250	3000/2755	550	80	OWL
17	LT265/65R17	10PR	120/117	S	11	272	8J	776	-	1400/1285	3085/2835	550	80	OWL

The labeling information is subject to change without notice.

# ROYAL M/T

Service time -----  
 Economy -----  
 Maneuverability -----  
 Permissibility -----  
 Wear resistance -----  
 Safety -----



4 SEASON



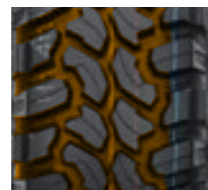
DRAINAGE



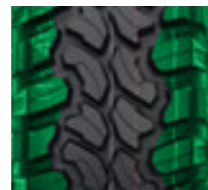
BRAKING



STABILITY



Three main zigzag grooves and aggressive pattern design provide outstanding traction on all of road conditons



High void ratio and open shoulder offer excellent resistance to aquaplaning and self-cleaning performance



The block road design with multiple-sipes provide out standing off-road condition. Special casing profile and solid shoulder pattern enhance the max traction and conering performance.



Jointless Nylon band and strong structure design provide the strong carcass to enhance the reliability and durability. Special tread compound and wide footprint enhance tread life and deliver excellent braking on wet and dry roads

## ROYAL M/T M+S

	Size	PR	Loading Index	Speed Rating	Tread Depth (mm)	Inflatable Section Width(mm)	Standard Rim	Overall Diameter (mm)	UTQG	MAX Load Kg	MAX Load lBS	MAX Pressure Kpa	MAX Pressure Psi	Sidewall Description
18	35×12.50R18LT	10PR	123	Q	13	318	10J	877	-	1550	3415	450	65	BSW
	33×12.50R18LT(POR)	10PR	118	Q	13	318	10J	826	-	1320	2910	450	65	BSW
17	37×12.50R17LT	8PR	124	Q	13	318	10J	928	-	1600	3525	350	50	BSW
	35×12.50R17LT(POR)	10PR	121	Q	13	318	10J	877	-	1450	3195	450	65	BSW
	33×12.50R17LT(POR)	10PR	120	Q	13	318	10J	826	-	1400	3085	450	65	BSW
	LT285/70R17(POR)	10PR	121/118	Q	13.2	292	8 1/2J	832	-	1450/1320	3195/2910	550	80	BSW
16	LT265/70R17(POR)	10PR	121/118	Q	13.2	272	8J	804	-	1450/1320	3195/2910	550	80	BSW
	315/75R16LT	10PR	127/124	Q	13	313	8 1/2J	878	-	1750/1600	3860/3525	450	65	BSW
	305/70R16LT	10PR	124/121	Q	13	311	9J	834	-	1600/1450	3525/3195	450	65	BSW
	LT285/75R16	10PR	126/123	Q	13.2	286	8J	834	-	1700/1550	3750/3415	550	80	BSW
	LT265/75R16	10PR	123/120	Q	13	267	7 1/2J	804	-	1550/1400	3415/3085	550	80	BSW
	LT245/75R16(POR)	10PR	120/116	Q	13	248	7J	774	-	1380/1260	3042/2778	550	80	BSW
15	LT235/85R16(POR)	10PR	120/116	Q	13	235	6 1/2J	806	-	1380/1260	3042/2778	550	80	BSW
	35×12.50R15LT(POR)	6PR	113	Q	13.2	318	10J	877	-	1150	2535	250	35	BSW
	33×12.50R15LT(POR)	6PR	108	Q	13.2	318	10J	826	-	1000	2205	250	35	BSW
	31×10.50R15LT(POR)	6PR	109	Q	13	268	8 1/2J	775	-	1030	2270	350	51	BSW
	LT235/75R15(POR)	6PR	104/101	Q	13	235	6 1/2J	733	-	900/825	1985/1820	350	50	BSW

The labeling information is subject to change without notice.

# ROYAL M/T II

- Service time
- Economy
- Maneuverability
- Permissibility
- Wear resistance
- Safety



Off-Road Maximum Traction Tyre, designed for extreme 4X4 application, confidence in performance on muddy, snowy and rocky terrain as well as sealed road performance, with extra ground clearance, higher load-carrying capacity, and greater ability to go off-road. 4X4 enthusiasts know it for its long wear, low noise and aggressive tread pattern.

Strategically placed ribs within the lateral grooves of the tread design help to discharge stones and resist stone drilling.

Specially developed tread compound helps resist the cutting, tearing and chunking commonly developed in extended off-road

Strategically placed in the lower side wall area, a raised rim protector helps protect the wheel and tyre from hazards in off-road driving conditions.



4 SEASON



DRAINAGE



BRAKING



GOOD DESIGN

## ROYAL M/T II M+S

	Size	PR	Loading Index	Speed Rating	Tread Depth (mm)	Inflatable Section Width(mm)	Standard Rim	Overall Diameter (mm)	UTQG	MAX Load Kg	MAX Load lBS	MAX Pressure Kpa	MAX Pressure Psi	Sidewall Description
22	37×12.50R22LT	10PR	123	Q	14.2	318	10J	928	-	1550	3415	450	65	BSW
20	35×12.50R22LT	10PR	117	Q	14.2	318	10J	877	-	1285	2835	450	65	BSW
	35×12.50R20LT	10PR	121	Q	14	318	10J	877	-	1450	3195	450	65	BSW
	33×12.50R20LT	10PR	114	Q	14	318	10J	826	-	1180	2600	450	65	BSW

The labeling information is subject to change without notice.

# ROYAL Commercial

- Service time
- Economy
- Maneuverability
- Permissibility
- Wear resistance
- Safety



STABILITY



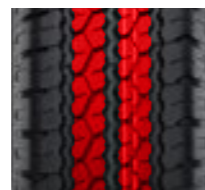
SILENCE



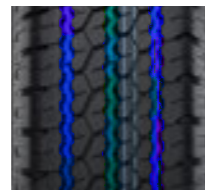
ECONOMY



WET



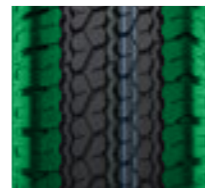
The new butterfly pattern.



Tortuous longitudinal main grooves with cross coherent transverse grooves and sipes supplemented.



Outline the latest design technology.



Special wear resistant tread compound.

## ROYAL Commercial M+S

	Size	PR	Loading Index	Speed Rating	Tread Depth (mm)	Inflatable Section Width(mm)	Standard Rim	Overall Diameter (mm)	UTQG	MAX Load Kg	IBS	MAX Pressure Kpa	MAX Pressure Psi	Sidewall Description
16	235/65R16C	8PR	115/113	T	10	240	7J	712	-	1215/1150	2680/2535	475	69	BSW
	225/65R16C	8PR	112/110	T	8.7	228	6 1/2J	698	-	1120/1060	2470/2335	475	69	BSW
	215/75R16C	8PR	113/111	R	8.5	216	6J	728	-	1150/1090	2535/2405	475	69	BSW
	215/70R16C	6PR	108/106	R	8.6	221	6 1/2J	708	-	1000/950	2205/2095	375	55	BSW
	215/65R16C	8PR	109/107	T	8.5	221	6 1/2J	686	-	1030/975	2270/2150	475	69	BSW
	205/75R16C	8PR	110/108	R	8.5	203	5 1/2J	714	-	1060/1000	2335/2205	475	69	BSW
	205/65R16C	8PR	107/105	T	8.5	209	6J	672	-	975/925	2150/2040	475	69	BSW
	195/75R16C	10PR	110/108	T	8.2	196	5 1/2J	698	-	1060/1000	2335/2205	525	75	BSW
	195/75R16C	8PR	107/105	R	8.2	196	5 1/2J	698	-	975/925	2150/2040	475	69	BSW
	195/65R16C	8PR	104/102	T	8.5	201	6J	660	-	900/850	1985/1875	475	69	BSW
15	185/75R16C	8PR	104/102	R	8.2	184	5J	684	-	900/850	1985/1875	475	69	BSW
	175/75R16C	8PR	101/99	R	7.8	177	5J	668	-	825/775	1820/1710	475	69	BSW
	225/70R15C	8PR	112/110	R	8.7	228	6 1/2J	697	-	1120/1060	2470/2335	450	65	BSW
	215/70R15C	8PR	109/107	R	8.5	221	6 1/2J	683	-	1030/975	2270/2150	450	65	BSW
	215/65R15C	6PR	104/102	T	8.5	221	6 1/2J	661	-	900/850	1985/1875	375	55	BSW
	205/70R15C	8PR	106/104	R	8.5	209	6J	669	-	950/900	2095/1985	450	65	BSW
	195/70R15C	8PR	104/102	R	8.5	201	6J	655	-	900/850	1985/1875	450	65	BSW
	195R15C	8PR	106/104	R	8.2	196	5 1/2J	693	-	950/900	2095/1985	450	65	BSW
	195R14C	8PR	106/104	R	8.2	198	5 1/2J	666	-	950/900	2095/1985	450	65	BSW
	185R14C	8PR	102/100	R	8.2	188	5 1/2J	650	-	850/800	1875/1765	450	65	BSW
14	175/65R14C	6PR	90/88	T	8.2	177	5J	584	-	600/560	1325/1235	375	55	BSW
	165/70R14C	6PR	89/87	R	7.8	170	5J	588	-	580/545	1280/1200	375	55	BSW
	155R13C	8PR	90/88	R	7.8	157	4.50B	578	-	600/560	1325/1235	450	65	BSW
	155R12C	8PR	88/86	R	7.8	157	4.50B	550	-	560/530	1235/1170	450	65	BSW
13	145R12C	8PR	86/84	Q	7.8	147	4.00B	542	-	530/500	1170/1100	450	65	BSW

The labeling information is subject to change without notice.

# ROYAL VAN

- Service time
- Economy
- Maneuverability
- Permissibility
- Wear resistance
- Safety



STABILITY



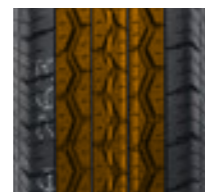
DRAINAGE



ECONOMY



4 SEASON



Reinforced structure and special abrasion resistant tread compound deliver extra puncture resistance and load bearing capability with more mileage.



Three main zigzag grooves combined with lateral blocks provide excellent ride stability and great traction on all kinds of road conditions.



Continuous tread patterns on shoulder and solid shoulder ribs responsive handling and even wear.



White sidewall rib shows extraordinary appearance.

## ROYAL VAN M+S

	Size	PR	Loading Index	Speed Rating	Tread Depth (mm)	Inflatable Section Width(mm)	Standard Rim	Overall Diameter (mm)	UTQG	MAX Load Kg	MAX Load IBS	MAX Pressure Kpa	MAX Pressure Psi	Sidewall Description
15	205/75R15C	8PR	109/107	R	8.7	203	5 1/2J	689	-	1030/975	2270/2150	475	69	BSW
14	195R15C	8PR	106/104	R	8.2	196	5 1/2J	693	-	950/900	2095/1985	450	65	BSW
	185R15C	8PR	103/102	R	8.2	188	5 1/2J	674	-	875/850	1930/1875	450	65	BSW
	205/75R14C	8PR	109/107	R	8.7	203	5 1/2J	664	-	1030/975	2270/2150	475	69	BSW
	195R14C	8PR	106/104	R	8.2	198	5 1/2J	666	-	950/900	2095/1985	450	65	BSW
13	185R14C	8PR	102/100	R	8.2	188	5 1/2J	650	-	850/800	1875/1765	450	65	BSW
	165R13C	8PR	94/93	R	7.8	167	4.50B	596	-	670/650	1475/1435	450	65	BSW
	165R13C	6PR	91/89	R	7.8	167	4.50B	596	-	615/580	1355/1280	375	55	BSW
	155R13C	8PR	90/88	R	7.8	157	4.50B	578	-	600/560	1325/1235	450	65	BSW
	155R13C	6PR	85/83	R	7.8	157	4.50B	578	-	515/487	1135/1075	350	50	BSW

The labeling information is subject to change without notice.

# ROYAL GAZILL

Service time

Economy

Maneuverability

Permissibility

Wear resistance

Safety



STABILITY



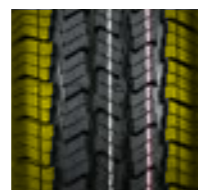
SILENCE



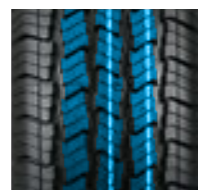
DRAINAGE



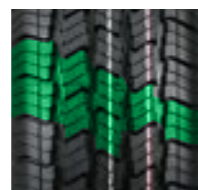
BRAKING



Multi-sipe shoulder can removes water quickly and give more tire tread on road to prevent hydroplaning.



Lateral blocks provide better grip performance in different road conditions.



Vaeiable Pitch patterns can reduce road noise to offer quie tride and increase traction.

## GAZILL M+S

Size	PR	Loading Index	Speed Rating	Tread Depth (mm)	Inflatable Section Width(mm)	Standard Rim	Overall Diameter (mm)	UTQG	MAX Load		MAX Pressure		Sidewall Description
									Kg	IBS	Kpa	Psi	
195/75R16C	8PR	107/105	R	8.1	196	5 1/2J	698	-	975/925	2150/2040	475	69	BSW
185/75R16C	8PR	104/102	R	8.2	184	5J	684	-	900/850	1985/1875	475	69	BSW

The labeling information is subject to change without notice.

# ROYAL WINTER HP



SNOW&ICE



COMFORT



STABILITY



DRAINAGE

Service time

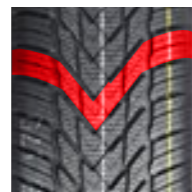
Economy

Maneuverability

Permissibility

Wear resistance

Safety



V-shaped embedded pattern design:  
The embedded pattern design has both appearance and practicality, and the sharp-angle pattern block can effectively pierce the water film to enhance the grip.



Optimized horizontal groove design:  
The horizontal grooves of alternating thick and thin meet the safety of driving in the changeable snow.



Z-shaped longitudinal groove design:  
The zigzag-shaped longitudinal grooves help the blocks to stabilize on the snow surface, and can effectively cooperate to ensure the snow passing ability in the forward direction.



Rotation pattern:  
It satisfies the comfortable driving texture while improving the driving stability, improving the passability of the snow surface, and ensuring driving safety.

## ROYAL WINTER HP M+S



	Size	PR	Loading Index	Speed Rating	Tread Depth (mm)	Inflatable Section Width(mm)	Standard Rim	Overall Diameter (mm)	UTQG	MAX Load Kg	MAX Load IBS	MAX Pressure Kpa	MAX Pressure Psi	Sidewall Description
17	245/65R17 XL	-	111	T	8.2	248	7.0J	750	-	1090	2403	340	50	BSW
	235/65R17 XL	-	108	T	8.2	240	7.0J	738	-	1000	2205	340	50	BSW
	225/65R17	-	102	T	8.2	228	6.5J	724	-	850	1874	300	44	BSW
	225/60R17	-	99	H	8.2	228	6.5J	702	-	775	1709	300	44	BSW
	215/65R17	-	99	H	8.2	221	6.5J	712	-	775	1709	300	44	BSW
16	215/60R17	-	96	H	8.2	221	6.5J	690	-	710	1565	300	44	BSW
	245/70R16 XL	-	111	T	8.2	248	7.0J	750	-	1090	2403	340	50	BSW
	235/70R16	-	106	T	8.2	240	7.0J	736	-	950	2094	300	44	BSW
	235/65R16	-	103	H	8.2	240	7.0J	712	-	875	1929	300	44	BSW
	225/70R16 XL	-	107	T	8.2	228	6.5J	722	-	975	2149	340	50	BSW
	225/65R16	-	100	H	8.2	228	6.5J	698	-	800	1764	300	44	BSW
	225/60R16	-	98	H	8.2	228	6.5J	676	-	750	1653	300	44	BSW
	215/70R16	-	100	T	8.2	221	6.5J	708	-	800	1764	300	44	BSW
	215/65R16	-	98	H	8.2	221	6.5J	686	-	750	1653	300	44	BSW
	215/60R16 XL	-	99	H	8.2	221	6.5J	664	-	775	1709	340	50	BSW
	205/60R16 XL	-	96	H	8.2	209	6.0J	652	-	710	1565	340	50	BSW
	205/55R16	-	91	H	8	214	6.5J	632	-	615	1356	300	44	BSW
15	195/50R16 XL	-	88	H	8	201	6.0J	602	-	560	1235	340	50	BSW
	215/70R15	-	98	T	8.2	221	6.5J	683	-	750	1653	300	44	BSW
	215/65R15 XL	-	100	H	8.2	221	6.5J	661	-	800	1764	340	50	BSW
	205/70R15	-	96	T	8.2	209	6.0J	669	-	710	1565	300	44	BSW
	205/65R15	-	94	H	8.2	209	6.0J	647	-	670	1477	300	44	BSW
	205/60R15	-	91	H	8.2	209	6.0J	627	-	615	1356	300	44	BSW
	195/65R15 XL	-	95	T	8.1	201	6.0J	635	-	690	1521	340	50	BSW
	195/60R15	-	88	H	8	201	6.0J	615	-	560	1235	300	44	BSW
	185/65R15	-	88	H	8	189	5.5J	621	-	560	1235	300	44	BSW
	185/60R15 XL	-	88	H	8	189	5.5J	603	-	560	1235	340	50	BSW
	185/55R15	-	82	H	8	194	6.0J	585	-	475	1047	300	44	BSW
	175/65R15	-	84	T	8	177	5.0J	609	-	500	1102	300	44	BSW
	175/60R15	-	81	T	8	177	5.0J	591	-	462	1019	300	44	BSW
	175/55R15	-	77	T	8	182	5.5J	573	-	412	908	300	44	BSW
	165/65R15	-	81	T	7.8	170	5.0J	595	-	462	1019	300	44	BSW
165/60R15 XL	-	81	T	7.8	170	5.0J	579	-	462	1019	340	50	BSW	
14	155/60R15	-	74	T	7.8	157	4.5J	567	-	375	827	300	44	BSW
	195/70R14 XL	-	95	T	8	201	6.0J	630	-	690	1521	340	50	BSW
	185/70R14 XL	-	92	T	8	189	5.5J	616	-	630	1389	340	50	BSW
	185/65R14	-	86	T	8	189	5.5J	596	-	530	1168	300	44	BSW
	185/60R14	-	82	T	8	189	5.5J	578	-	475	1047	300	44	BSW
	185/55R14	-	80	T	8	194	6.0J	560	-	450	992	300	44	BSW
	175/70R14 XL	-	88	T	8	177	5.0J	602	-	560	1235	340	50	BSW
	175/65R14	-	82	T	8	177	5.0J	584	-	475	1047	300	44	BSW
	165/70R14 XL	-	85	T	7.8	170	5.0J	588	-	515	1135	340	50	BSW
	165/65R14	-	79	T	7.8	170	5.0J	570	-	437	963	300	44	BSW
13	165/60R14	-	75	T	7.8	170	5.0J	554	-	387	853	300	44	BSW
	155/65R14	-	75	T	7.8	157	4.5J	558	-	387	853	300	44	BSW
	175/70R13	-	82	T	8	177	5.0J	576	-	475	1047	300	44	BSW
	155/80R13	-	79	T	7.8	157	4.5J	578	-	437	963	300	44	BSW
	155/70R13	-	75	T	7.9	157	4.5J	548	-	387	853	300	44	BSW
155/65R13	-	73	T	7.9	157	4.5J	532	-	365	805	300	44	BSW	

The labeling information is subject to change without notice.

# ROYAL WINTER UHP



Service time

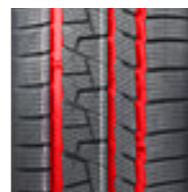
Economy

Maneuverability

Permissibility

Wear resistance

Safety



**Asymmetric pattern:**  
Match the performance requirements of high-end sports cars. Wide inner gully design enhances drainage effect. The outside of the dense pattern block provides strong handling performance.



**Blade cut angular pattern block:**  
Provides higher grip and the ability to break through the water film, deep into the snow surface. 3D wavy steel sheet design provides good grip while increasing tread hardness to meet extreme handling.



**Folding groove:**  
It can effectively improve the fault tolerance rate in all directions, assist in controlling the vehicle attitude, and improve the ultimate controllability.



**Silica formula:**  
The special silica formula guarantees the softness on the snow while increasing the strength of the pattern blocks to meet the controllability.

## ROYAL WINTER UHP M+S



	Size	PR	Loading Index	Speed Rating	Tread Depth (mm)	Inflatable Section Width (mm)	Standard Rim	Overall Diameter (mm)	UTQG	MAX Load Kg	MAX Load 1BS	MAX Pressure Kpa	MAX Pressure Psi	Sidewall Description
21	265/45R21 XL	-	108	V	7.8	266	9.0J	771	-	1000	2205	340	50	BSW
	315/35R20 XL	-	110	V	7.8	320	11.0J	728	-	1060	2337	340	50	BSW
	275/60R20 XL	-	119	H	8.1	279	8.0J	838	-	1360	2998	340	50	BSW
	275/55R20 XL	-	117	H	7.8	284	8.5J	810	-	1285	2833	340	50	BSW
	255/50R20 XL	-	109	V	7.8	265	8.0J	764	-	1030	2271	340	50	BSW
19	275/45R20 XL	-	110	V	7.8	273	9.0J	756	-	1060	2337	340	50	BSW
	275/40R20 XL	-	106	V	7.8	278	9.5J	728	-	950	2094	340	50	BSW
	275/40R19 XL	-	105	V	7.8	278	9.5J	703	-	925	2039	340	50	BSW
	275/35R19 XL	-	100	V	7.8	278	9.5J	675	-	800	1764	340	50	BSW
	255/55R19 XL	-	111	V	7.8	265	8.0J	763	-	1090	2403	340	50	BSW
	255/50R19 XL	-	107	V	7.8	265	8.0J	739	-	975	2149	340	50	BSW
	255/45R19 XL	-	104	V	7.8	255	8.5J	713	-	900	1984	340	50	BSW
	255/40R19 XL	-	100	V	7.8	260	9.0J	687	-	800	1764	340	50	BSW
	255/35R19 XL	-	96	V	7.8	260	9.0J	661	-	710	1565	340	50	BSW
	245/45R19 XL	-	102	V	7.8	243	8.0J	703	-	850	1874	340	50	BSW
18	245/40R19 XL	-	98	V	7.8	248	8.5J	679	-	750	1653	340	50	BSW
	235/55R19 XL	-	105	V	7.8	245	7.5J	741	-	925	2039	340	50	BSW
	235/50R19 XL	-	103	V	7.8	245	7.5J	719	-	875	1929	340	50	BSW
	225/55R19 XL	-	103	V	7.8	233	7.0J	731	-	875	1929	340	50	BSW
	225/45R19 XL	-	96	V	7.8	225	7.5J	685	-	710	1565	340	50	BSW
	225/40R19 XL	-	93	V	7.8	230	8.0J	663	-	650	1433	340	50	BSW
	255/55R18 XL	-	109	V	7.7	265	8.0J	737	-	1030	2271	340	50	BSW
	255/45R18 XL	-	103	V	7.8	255	8.5J	687	-	875	1929	340	50	BSW
	255/40R18 XL	-	99	V	7.8	260	9.0J	661	-	775	1709	340	50	BSW
	245/60R18	-	105	V	7.7	248	7.0J	751	-	925	2039	300	44	BSW
	245/45R18 XL	-	100	V	7.7	243	8.0J	677	-	800	1764	340	50	BSW
	245/40R18 XL	-	97	V	7.7	248	8.5J	653	-	730	1609	340	50	BSW
	235/60R18 XL	-	107	V	7.7	240	7.0J	739	-	975	2149	340	50	BSW
	235/55R18 XL	-	104	V	7.7	245	7.5J	715	-	900	1984	340	50	BSW
	235/50R18 XL	-	101	V	7.8	245	7.5J	693	-	825	1819	340	50	BSW
235/45R18 XL	-	98	V	7.7	236	8.0J	669	-	750	1653	340	50	BSW	
235/40R18 XL	-	95	V	7.8	241	8.5J	645	-	690	1521	340	50	BSW	
225/55R18	-	98	V	7.8	233	7.0J	705	-	750	1653	300	44	BSW	
225/45R18 XL	-	95	V	7.7	225	7.5J	659	-	690	1521	340	50	BSW	
225/40R18 XL	-	92	V	7.7	230	8.0J	637	-	630	1389	340	50	BSW	
215/55R18 XL	-	99	V	7.8	226	7.0J	693	-	775	1709	340	50	BSW	
215/45R18 XL	-	93	V	7.8	213	7.0J	651	-	650	1433	340	50	BSW	
17	265/65R17	-	112	T	8.1	272	8.0J	776	-	1120	2469	300	44	BSW
	245/45R17 XL	-	99	V	7.8	243	8.0J	652	-	775	1709	340	50	BSW
	245/40R17 XL	-	95	V	7.8	248	8.5J	628	-	690	1521	340	50	BSW
	235/55R17 XL	-	103	V	7.7	245	7.5J	690	-	875	1929	340	50	BSW
	235/45R17 XL	-	97	V	7.7	236	8.0J	644	-	730	1609	340	50	BSW
	225/55R17 XL	-	101	V	7.7	233	7.0J	680	-	825	1819	340	50	BSW
	225/50R17 XL	-	98	V	7.7	233	7.0J	658	-	750	1653	340	50	BSW
	225/45R17 XL	-	94	V	7.7	225	7.5J	634	-	670	1477	340	50	BSW
	215/55R17 XL	-	98	V	7.7	226	7.0J	668	-	750	1653	340	50	BSW
	215/50R17 XL	-	95	V	7.7	226	7.0J	648	-	690	1521	340	50	BSW
16	215/45R17 XL	-	91	V	7.8	213	7.0J	626	-	615	1356	340	50	BSW
	215/40R17 XL	-	87	V	7.8	218	7.5J	604	-	545	1201	340	50	BSW
	205/55R17 XL	-	95	V	7.8	214	6.5J	658	-	690	1521	340	50	BSW
	205/50R17 XL	-	93	V	7.7	214	6.5J	638	-	650	1433	340	50	BSW
	265/70R16	-	112	H	8.1	272	8.0J	778	-	1120	2469	300	44	BSW
	225/55R16 XL	-	99	V	7.7	233	7.0J	654	-	775	1709	340	50	BSW
	215/55R16 XL	-	97	H	7.7	226	7.0J	642	-	730	1609	340	50	BSW
	215/45R16 XL	-	90	H	7.8	213	7.0J	600	-	600	1323	340	50	BSW
15	195/55R16 XL	-	91	H	7.7	201	6.0J	620	-	615	1356	340	50	BSW
	195/55R15	-	85	V	7.7	201	6.0J	595	-	515	1135	300	44	BSW
	195/50R15	-	82	V	7.7	201	6.0J	577	-	475	1047	300	44	BSW

The labeling information is subject to change without notice.

# ROYAL WINTER



- Service time
- Economy
- Maneuverability
- Permissibility
- Wear resistance
- Safety



SNOW&ICE



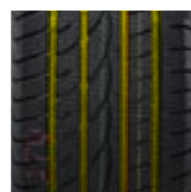
COMFORT



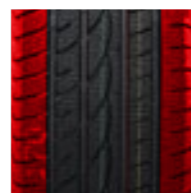
HIGH PERFORMANCE



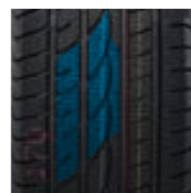
SILENCE



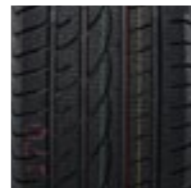
Four wide circumferential tread grooves and lateral grooves with fine sipes provide efficient water evacuation, outstanding wet performance. The optimized deployment of "Z" shape sipes, provide great grip on snow & ice conditions.



Continuous block patterns on shoulder enhance the ride stability at high speed cornering. The rim protector will protect wheels from curb damage.



Continuous outside tread blocks enhance excellent performance and precise control when cornering at highspeed. The special rib segment design optimize contact pressure distribution, improve road contact area and provide precise control. The serrated groove walls absorb noise and deliver a quieter ride.



Special tread compound remain flexible at lower temperatures to make sure the grip on winter road conditions and reduce the rolling resistance.

## ROYAL WINTER M+S



	Size	PR	Loading Index	Speed Rating	Tread Depth (mm)	Inflatable Section Width(mm)	Standard Rim	Overall Diameter (mm)	UTQG	MAX Load Kg	MAX Load IBS	MAX Pressure Kpa	MAX Pressure Psi	Sidewall Description
21	265/45R21 XL	-	108	V	7.7	266	9J	771	-	1000	2205	340	50	BSW
20	315/35R20 XL	-	110	V	8	320	11J	728	-	1060	2337	340	50	BSW
	275/45R20 XL	-	110	H	8.2	273	9J	756	-	1060	2337	340	50	BSW
	275/40R20 XL	-	106	H	8.2	278	9 1/2J	728	-	950	2094	340	50	BSW
19	275/40R19 XL	-	105	V	7.7	278	9 1/2J	703	-	925	2039	340	50	BSW
	255/55R19 XL	-	111	H	8.2	265	8J	763	-	1090	2403	340	50	BSW
	255/50R19 XL	-	107	H	8.2	265	8J	739	-	975	2149	340	50	BSW
	245/45R19 XL	-	102	H	8.2	243	8J	703	-	850	1874	340	50	BSW
	235/55R19 XL	-	105	H	8.2	245	7 1/2J	741	-	925	2039	340	50	BSW
18	255/55R18 XL	-	109	V	8.2	265	8J	737	-	1030	2271	340	50	BSW
	255/55R18 XL	-	109	H	8.2	265	8J	737	-	1030	2271	340	50	BSW
	245/60R18	-	105	H	8.2	248	7J	751	-	925	2039	300	44	BSW
	245/45R18 XL	-	100	H	8.2	243	8J	677	-	800	1764	340	50	BSW
	245/45R18 XL	-	100	V	8.2	243	8J	677	-	800	1764	340	50	BSW
	245/40R18 XL	-	97	V	7.7	248	8 1/2J	653	-	730	1609	340	50	BSW
	235/60R18 XL	-	107	H	8.2	240	7J	739	-	975	2149	340	50	BSW
	235/55R18 XL	-	104	H	8.2	245	7 1/2J	715	-	900	1984	340	50	BSW
	235/45R18 XL	-	98	H	8.2	236	8J	669	-	750	1653	340	50	BSW
	235/45R18 XL	-	98	V	8.2	236	8J	669	-	750	1653	340	50	BSW
	225/45R18 XL	-	95	H	8.2	225	7 1/2J	659	-	690	1521	340	50	BSW
	225/40R18 XL	-	92	H	8.2	230	8J	637	-	630	1389	340	50	BSW
	225/40R18 XL	-	92	V	8.2	230	8J	637	-	630	1389	340	50	BSW
17	235/55R17 XL	-	103	H	8.2	245	7 1/2J	690	-	875	1929	340	50	BSW
	235/45R17 XL	-	97	H	8.3	236	8J	644	-	730	1609	340	50	BSW
	225/55R17 XL	-	101	V	8.2	233	7J	680	-	825	1819	340	50	BSW
	225/55R17 XL	-	101	H	8.2	233	7J	680	-	825	1819	340	50	BSW
	225/50R17 XL	-	98	V	8.2	233	7J	658	-	750	1653	340	50	BSW
	225/50R17 XL	-	98	H	8.2	233	7J	658	-	750	1653	340	50	BSW
	225/45R17 XL	-	94	V	8.3	225	7 1/2J	634	-	670	1477	340	50	BSW
	225/45R17 XL	-	94	H	8.3	225	7 1/2J	634	-	670	1477	340	50	BSW
	215/55R17 XL	-	98	V	8.2	226	7J	668	-	750	1653	340	50	BSW
	215/55R17 XL	-	98	H	8.2	226	7J	668	-	750	1653	340	50	BSW
	215/50R17 XL	-	95	H	8.2	226	7J	648	-	690	1521	340	50	BSW
	215/50R17 XL	-	95	V	8.2	226	7J	648	-	690	1521	340	50	BSW
	205/50R17 XL	-	93	H	8.2	214	6 1/2J	638	-	650	1433	340	50	BSW
	205/50R17 XL	-	93	V	8.2	214	6 1/2J	638	-	650	1433	340	50	BSW
16	225/55R16 XL	-	99	H	9.1	233	7J	654	-	775	1709	340	50	BSW
	215/55R16 XL	-	97	H	8.3	226	7J	642	-	730	1609	340	50	BSW
	205/55R16 XL	-	94	H	8.3	214	6 1/2J	632	-	670	1477	340	50	BSW
	205/55R16	-	91	H	8.3	214	6 1/2J	632	-	615	1356	300	44	BSW
	195/55R16 XL	-	91	H	8.3	201	6J	620	-	615	1356	340	50	BSW
15	195/65R15 XL	-	95	T	8.3	201	6J	635	-	690	1521	340	50	BSW
	195/65R15	-	91	H	8.3	201	6J	635	-	615	1356	300	44	BSW
	195/65R15	-	91	T	8.3	201	6J	635	-	615	1356	300	44	BSW
	195/60R15	-	88	H	8.3	201	6J	615	-	560	1235	300	44	BSW
	195/55R15	-	85	H	8.3	201	6J	595	-	515	1135	300	44	BSW
	195/50R15	-	82	H	8.3	201	6J	577	-	475	1047	300	44	BSW
14	185/60R14	-	82	T	8.3	189	5 1/2J	578	-	475	1047	300	44	BSW
13	165/70R13	-	79	T	7.8	170	5J	562	-	437	963	300	44	BSW

The labeling information is subject to change without notice.

# ROYAL WINTER VAN



SNOW&ICE



WET



STABILITY



DRAINAGE

Service time

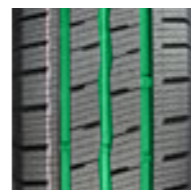
Economy

Maneuverability

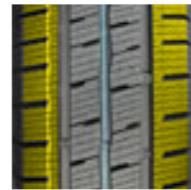
Permissibility

Wear resistance

Safety



**Optimized groove:**  
It is beneficial to improve the stability of driving on ice and improve driving safety.



**Shoulder support:**  
The Shoulder continuity pattern block can improve the strength of the tire shoulder, improve the support effect with the ground, and ensure driving safety.



**Optimized structure profile:**  
The optimized structure profile is matched with dense and robust pattern blocks to meet the better carrying capacity of the vehicle.



**New steel sheet design:**  
The optimized steel sheet structure can meet the requirement of anti-skid performance and evenly disperse various stresses, so that the tread wear is more uniform and the wear resistance is improved.

## ROYAL WINTER VAN M+S



Size	PR	Loading Index	Speed Rating	Tread Depth (mm)	Inflatable Section Width(mm)	Standard Rim	Overall Diameter (mm)	UTQG	MAX Load		MAX Pressure		Sidewall Description
									Kg	IBS	Kpa	Psi	
16 235/65R16C	8PR	115/113	R	9	240	7.0J	712	-	1215/1150	2679/2535	475	70	BSW
225/75R16C	10PR	121/120	R	8.9	223	6.0J	744	-	1450/1400	3195/3085	575	85	BSW
225/65R16C	8PR	112/110	R	8.9	228	6.5J	698	-	1120/1060	2470/2335	475	70	BSW
215/75R16C	8PR	113/111	R	8.9	216	6.0J	728	-	1150/1090	2535/2405	475	70	BSW
215/65R16C	8PR	109/107	R	8.6	221	6.5J	686	-	1030/975	2270/2150	475	70	BSW
215/60R16C	6PR	103/101	R	8.6	221	6.5J	664	-	875/825	1930/1820	375	55	BSW
205/75R16C	8PR	110/108	R	8.6	203	5.5J	714	-	1060/1000	2335/2205	475	70	BSW
205/65R16C	8PR	107/105	R	8.6	209	6.0J	672	-	975/925	2150/2040	475	70	BSW
195/75R16C	8PR	107/105	R	8.6	196	5.5J	698	-	975/925	2150/2040	475	70	BSW
195/65R16C	8PR	104/102	R	8.6	201	6.0J	660	-	900/850	1985/1875	475	70	BSW
195/60R16C	6PR	99/97	T	8.6	201	6.0J	640	-	775/730	1710/1610	375	55	BSW
185/75R16C	8PR	104/102	R	8.6	184	5.0J	684	-	900/850	1985/1875	475	70	BSW
175/75R16C	8PR	101/99	R	8.3	177	5.0J	668	-	825/775	1820/1710	475	70	BSW
15 225/70R15C	8PR	112/110	R	8.9	228	6.5J	697	-	1120/1060	2470/2335	450	65	BSW
215/70R15C	8PR	109/107	R	8.6	221	6.5J	683	-	1030/975	2270/2150	450	65	BSW
215/65R15C	6PR	104/102	R	8.6	221	6.5J	661	-	900/850	1985/1875	375	55	BSW
205/70R15C	8PR	106/104	R	8.6	209	6.0J	669	-	950/900	2095/1985	450	65	BSW
14 195/70R15C	8PR	104/102	R	8.6	201	6.0J	655	-	900/850	1985/1875	450	65	BSW
185R14C	8PR	102/100	R	8.3	188	5.5J	650	-	850/800	1875/1765	450	65	BSW
175/70R14C	6PR	95/93	T	8.3	177	5.0J	602	-	690/650	1521/1435	375	55	BSW
175/65R14C	6PR	90/88	T	8.3	177	5.0J	584	-	600/560	1325/1235	375	55	BSW
175R14C	8PR	99/98	R	8.3	178	5.0J	634	-	775/750	1710/1655	450	65	BSW
165/70R14C	6PR	89/87	R	8.3	170	5.0J	588	-	580/545	1280/1200	375	55	BSW

The labeling information is subject to change without notice.

# ROYAL ICE



Service time

Economy

Maneuverability

Permissibility

Wear resistance

Safety



SNOW&ICE



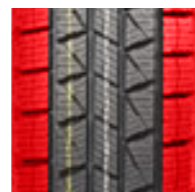
BRAKING



STABILITY



DRAINAGE



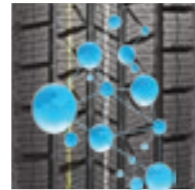
Multi-directional groove distribution design: It is beneficial to improve the stability of driving in the ice and the safety of driving.



Diamond Angle cutting design: Can effectively pierce through the water film, stabilize on ice and improve the anti-slip effect.



High-density 3D steel sheet design: While ensuring the softness of the grounding surface of the tire, it also increases the strength of the overall pattern block to ensure super grip and reduce the feeling of driving lag.



High-score white carbon black formula design: Improve tire grip in cold environments and ensure tire safety performance at low temperatures.

## ROYAL ICE M+S



	Size	PR	Loading Index	Speed Rating	Tread Depth (mm)	Inflatable Section Width(mm)	Standard Rim	Overall Diameter (mm)	UTQG	MAX Load Kg	MAX Load lBS	MAX Pressure Kpa	MAX Pressure Psi	Sidewall Description
17	285/65R17	-	116	S	9.2	292	8.5J	802	-	1250	2756	300	44	BSW
	265/65R17	-	112	S	9.1	272	8.0J	776	-	1120	2469	300	44	BSW
	245/45R17	-	95	S	8.4	243	8J	652	-	690	1521	300	44	BSW
	235/65R17 XL	-	108	S	8.7	240	7.0J	738	-	1000	2205	340	50	BSW
	235/55R17	-	99	S	8.4	245	7.5J	690	-	775	1709	300	44	BSW
	225/65R17	-	102	S	8.7	228	6.5J	724	-	850	1874	300	44	BSW
	225/60R17	-	99	S	8.7	228	6.5J	702	-	775	1709	300	44	BSW
	225/55R17	-	97	S	8.4	233	7.0J	680	-	730	1609	300	44	BSW
	225/50R17 XL	-	98	S	8.4	233	7.0J	658	-	750	1653	340	50	BSW
	225/45R17 XL	-	94	S	8.4	225	7.5J	634	-	670	1477	340	50	BSW
	215/60R17	-	96	S	8.7	221	6.5J	690	-	710	1565	300	44	BSW
	215/55R17	-	94	S	8.4	226	7.0J	668	-	670	1477	300	44	BSW
	215/50R17 XL	-	95	S	8.4	226	7.0J	648	-	690	1521	340	50	BSW
	215/45R17 XL	-	91	S	8.4	213	7.0J	626	-	615	1356	340	50	BSW
16	235/70R16	-	106	S	8.7	240	7.0J	736	-	950	2094	300	44	BSW
	225/70R16 XL	-	107	S	8.7	228	6.5J	722	-	975	2149	340	50	BSW
	225/55R16	-	95	S	8.4	233	7.0J	654	-	690	1521	300	44	BSW
	215/70R16	-	100	S	8.7	221	6.5J	708	-	800	1764	300	44	BSW
	215/65R16	-	98	S	8.7	221	6.5J	686	-	750	1653	300	44	BSW
	215/60R16	-	95	S	8.7	221	6.5J	664	-	690	1521	300	44	BSW
	215/55R16	-	93	S	8.4	226	7.0J	642	-	650	1433	300	44	BSW
	205/60R16	-	92	S	8.7	209	6.0J	652	-	630	1389	300	44	BSW
	205/55R16	-	91	S	8.4	214	6.5J	632	-	615	1356	300	44	BSW
	195/75R16C	8PR	107/105	Q	9.7	196	5.5J	698	-	975/925	2150/2040	475	70	BSW
	195/60R16	-	89	S	8.4	201	6.0J	640	-	580	1279	300	44	BSW
	195/55R16	-	87	S	8.4	201	6.0J	620	-	545	1201	300	44	BSW
	185/75R16C	8PR	104/102	R	9.7	184	5.0J	684	-	900/850	1985/1875	475	70	BSW
	185/55R16	-	83	S	8.4	194	6.0J	610	-	487	1074	300	44	BSW
15	205/70R15	-	96	S	8.7	209	6.0J	669	-	710	1565	300	44	BSW
	205/65R15	-	94	S	8.7	209	6.0J	647	-	670	1477	300	44	BSW
	205/60R15	-	91	S	8.7	209	6.0J	627	-	615	1356	300	44	BSW
	195/65R15	-	91	S	8.5	201	6.0J	635	-	615	1356	300	44	BSW
	195/60R15	-	88	S	8.4	201	6.0J	615	-	560	1235	300	44	BSW
	195/55R15	-	85	S	8.4	201	6.0J	595	-	515	1135	300	44	BSW
	195/50R15	-	82	S	8.4	201	6.0J	577	-	475	1047	300	44	BSW
	185/65R15	-	88	S	8.4	189	5.5J	621	-	560	1235	300	44	BSW
	185/60R15	-	84	S	8.4	189	5.5J	603	-	500	1102	300	44	BSW
	185/55R15	-	82	S	8.4	194	6.0J	585	-	475	1047	300	44	BSW
14	185/70R14	-	88	S	8.2	189	5.5J	616	-	560	1235	300	44	BSW
	185/65R14	-	86	S	8.4	189	5.5J	596	-	530	1168	300	44	BSW
	185/60R14	-	82	S	8.4	189	5.5J	578	-	475	1047	300	44	BSW
	175/70R14	-	84	S	8.2	177	5.0J	602	-	500	1102	300	44	BSW
	175/65R14	-	82	S	8.2	177	5.0J	584	-	475	1047	300	44	BSW
13	175/70R13	-	82	S	8.2	177	5.0J	576	-	475	1047	300	44	BSW
	165/70R13	-	79	S	8.2	170	5.0J	562	-	437	963	300	44	BSW

The labeling information is subject to change without notice.

# ROYAL STUD



Service time

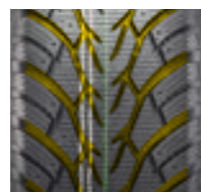
Economy

Maneuverability

Permissibility

Wear resistance

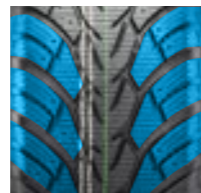
Safety



Ideal for conditions in the region which does not require extreme snow tyres and more performance is required.



A Directional tyre that offers fantastic water dispersion and exceptional grip thanks to its unique features which includes an excessive number of sips allowing the tread to conform to the road surface, and its extra wide channels that excavates fluids in preposition to the pressure and weight of the vehicle and road requirements.



This unique tread design also features a proven modular tread block geometry which offer a level of grip and performance which is unique in its class.



SNOW&ICE



BRAKING



STABILITY



DRAINAGE

## ROYAL STUD M+S



Size	PR	Loading Index	Speed Rating	Tread Depth (mm)	Inflatable Section Width(mm)	Standard Rim	Overall Diameter (mm)	UTQG	MAX Load		MAX Pressure		Sidewall Description	
									Kg	lBS	Kpa	Psi		
17	LT265/70R17	10PR	121/118	S	10.2	272	8J	804	-	1450/1320	3195/2910	550	80	BSW
	265/70R17	-	115	T	8.8	272	8J	804	-	1215	2679	300	44	BSW
	LT245/70R17	10PR	119/116	S	10.2	248	7J	776	-	1360/1250	3000/2755	550	80	BSW
	245/65R17 XL	-	111	T	8.7	248	7J	750	-	1090	2403	340	50	BSW
	235/65R17 XL	-	108	T	8.7	240	7J	738	-	1000	2205	340	50	BSW
	225/65R17 XL	-	106	T	8.7	228	6 1/2J	724	-	950	2094	340	50	BSW
	225/60R17 XL	-	103	H	8.7	228	6 1/2J	702	-	875	1929	340	50	BSW
	225/55R17 XL	-	101	H	8.7	233	7J	680	-	825	1819	340	50	BSW
	225/50R17 XL	-	98	H	8.7	233	7J	658	-	750	1653	340	50	BSW
	225/45R17 XL	-	94	H	8.8	225	7 1/2J	634	-	670	1477	340	50	BSW
	215/60R17 XL	-	100	H	8.7	221	6 1/2J	690	-	800	1764	340	50	BSW
	215/55R17 XL	-	98	H	8.7	226	7J	668	-	750	1653	340	50	BSW
16	LT245/75R16	10PR	120/116	S	10.2	248	7J	774	-	1380/1260	3042/2778	550	80	BSW
	235/70R16	-	106	T	8.7	240	7J	736	-	950	2094	300	44	BSW
	235/65R16C	8PR	115/113	R	9.7	240	7J	712	-	1215/1150	2680/2535	475	69	BSW
	LT225/75R16	10PR	115/112	S	10.2	223	6J	744	-	1215/1120	2680/2470	550	80	BSW
	225/65R16 XL	-	104	T	8.8	228	6 1/2J	698	-	900	1984	340	50	BSW
	225/60R16 XL	-	102	T	8.8	228	6 1/2J	676	-	850	1874	340	50	BSW
	215/70R16	-	100	T	8.8	221	6 1/2J	708	-	800	1764	300	44	BSW
	215/65R16 XL	-	102	T	8.8	221	6 1/2J	686	-	850	1874	340	50	BSW
	215/60R16 XL	-	99	T	8.8	221	6 1/2J	664	-	775	1709	340	50	BSW
	205/60R16 XL	-	96	T	8.7	209	6J	652	-	710	1565	340	50	BSW
	205/55R16 XL	-	94	T	8.8	214	6 1/2J	632	-	670	1477	340	50	BSW
	195/75R16C	8PR	107/105	R	8.6	196	5.5J	698	-	975/925	2150/2040	475	69	BSW
	185/75R16C	8PR	104/102	R	8.8	184	5J	684	-	900/850	1985/1875	475	69	BSW
15	195/65R15 XL	-	95	T	8.8	201	6J	635	-	690	1521	340	50	BSW
	195/60R15 XL	-	92	T	8.8	201	6J	615	-	630	1389	340	50	BSW
	185/65R15 XL	-	92	T	8.8	189	5 1/2J	621	-	630	1389	340	50	BSW
	185/60R15 XL	-	88	T	8.8	189	5 1/2J	603	-	560	1235	340	50	BSW
14	185/55R15 XL	-	86	T	8.6	194	6.0J	585	-	530	1168	340	50	BSW
	185/70R14 XL	-	92	T	8.6	189	5.5J	616	-	630	1389	340	50	BSW
	185/65R14 XL	-	90	T	8.8	189	5 1/2J	596	-	600	1323	340	50	BSW
	175/70R14	-	84	T	8.6	177	5.0J	602	-	500	1102	300	44	BSW
13	175/65R14 XL	-	86	T	8.8	177	5J	584	-	530	1168	340	50	BSW
	175/70R13	-	82	T	8.6	177	5.0J	576	-	475	1047	300	44	BSW

The labeling information is subject to change without notice.

# ROYAL STUD II



SNOW&ICE



BRAKING



STABILITY



DRAINAGE



TRAFICOM/664800/05.03.42/2023  
A FI0037

Service time

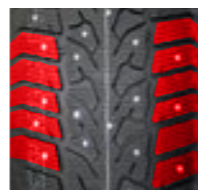
Economy

Maneuverability

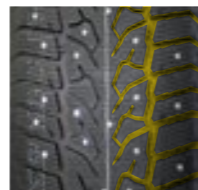
Permissibility

Wear resistance

Safety



The diamond-cut design of the tire shoulder enhances the bite with the snow and mud on the ground to avoid slipping.



The meandering horizontal grooves, ice skates and daggers are staggered and matched, which can effectively cut the ice layer, improve the grip on ice and snow, and enhance the control performance.



Through accurate calculation, the steel nails are evenly and randomly arranged horizontally and vertically, which not only ensures stable grip, but also reduces noise and vibration.



The design of multi-layer rubber with different hardness and double fange nails ensures that the tread is soft enough and can lock the nails at the same time, improving the ice performance of the tire.

## ROYAL STUD II M+S



	Size	PR	Loading Index	Speed Rating	Tread Depth (mm)	Inflatable Section Width(mm)	Standard Rim	Overall Diameter (mm)	UTQG	MAX Load Kg	MAX Load lBS	MAX Pressure Kpa	MAX Pressure Psi	Sidewall Description
21	265/45R21 XL	-	108	T	9.1	266	9.0J	771	-	1000	2205	340	50	BSW
	285/50R20 XL	-	116	T	9.1	297	9.0J	794	-	1250	2756	340	50	BSW
	LT275/65R20	10PR	126/123	Q	10.6	279	8J	866	-	1700/1550	3750/3415	550	80	BSW
	275/60R20 XL	-	119	T	9.1	279	8J	838	-	1360	2998	340	50	BSW
	275/55R20 XL	-	117	T	9.1	284	8 1/2J	810	-	1285	2833	340	50	BSW
20	255/50R20 XL	-	109	T	9.1	265	8.0J	764	-	1030	2271	340	50	BSW
	255/50R20 XL	-	110	T	9.1	265	8.0J	788	-	1060	2337	340	50	BSW
	255/45R20 XL	-	105	T	9.1	255	8 1/2J	738	-	925	2039	340	50	BSW
	245/50R20 XL	-	105	T	9.1	253	7.5J	754	-	925	2039	340	50	BSW
	245/45R20 XL	-	103	T	9.1	243	8.0J	728	-	875	1929	340	50	BSW
	235/55R20	-	102	T	9.1	245	7.5J	766	-	850	1874	300	44	BSW
	265/55R19 XL	-	113	T	9.1	277	8.5J	775	-	1150	2535	340	50	BSW
	255/55R19 XL	-	111	T	9.1	265	8.0J	763	-	1090	2403	340	50	BSW
	235/55R19 XL	-	105	T	9.1	245	7.5J	741	-	925	2039	340	50	BSW
	235/50R19 XL	-	103	T	9.1	245	7.5J	719	-	875	1929	340	50	BSW
19	235/45R19 XL	-	99	T	9.1	236	8.0J	695	-	775	1709	340	50	BSW
	225/55R19 XL	-	103	T	9.1	233	7.0J	731	-	875	1929	340	50	BSW
	285/60R18	-	116	T	9.1	292	8.5J	799	-	1250	2756	300	44	BSW
	LT275/65R18	10PR	123/120	Q	10.6	279	8J	815	-	1550/1400	3415/3085	550	80	BSW
	LT275/70R18	10PR	125/122	Q	10.6	279	8J	843	-	1650/1500	3640/3305	550	80	BSW
	265/65R18	-	114	T	9.1	272	8.0J	801	-	1180	2601	300	44	BSW
	265/60R18 XL	-	114	T	9.1	272	8.0J	775	-	1180	2601	340	50	BSW
	255/55R18 XL	-	109	T	9.1	265	8.0J	737	-	1030	2271	340	50	BSW
	245/60R18 XL	-	109	T	9.1	248	7J	751	-	1030	2271	340	50	BSW
	245/45R18 XL	-	100	T	9.1	243	8.0J	677	-	800	1764	340	50	BSW
	235/65R18 XL	-	110	T	9.1	240	7.0J	763	-	1060	2337	340	50	BSW
	235/60R18 XL	-	107	T	9.1	240	7.0J	739	-	975	2149	340	50	BSW
	235/55R18 XL	-	104	T	9.1	245	7.5J	715	-	900	1984	340	50	BSW
	235/50R18 XL	-	101	T	9.1	245	7 1/2J	693	-	825	1819	340	50	BSW
	235/45R18 XL	-	98	T	9.1	236	8.0J	669	-	750	1653	340	50	BSW
18	225/60R18 XL	-	104	T	9.1	228	6.5J	727	-	900	1984	340	50	BSW
	225/55R18 XL	-	102	T	9.1	233	7.0J	705	-	850	1874	340	50	BSW
	225/45R18 XL	-	95	T	9.1	225	7.5J	659	-	690	1521	340	50	BSW
	215/55R18 XL	-	99	T	9.1	226	7.0J	693	-	775	1709	340	50	BSW

The labeling information is subject to change without notice.

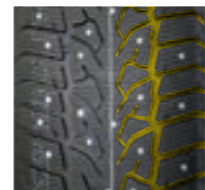
# ROYAL STUD II



- Service time
- Economy
- Maneuverability
- Permissibility
- Wear resistance
- Safety



The diamond-cut design of the tire shoulder enhances the bite with the snow and mud on the ground to avoid slipping.



The meandering horizontal grooves, ice skates and daggers are staggered and matched, which can effectively cut the ice layer, improve the grip on ice and snow, and enhance the control performance.



Through accurate calculation, the steel nails are evenly and randomly arranged horizontally and vertically, which not only ensures stable grip, but also reduces noise and vibration.



The design of multi-layer rubber with different hardness and double fange nails ensures that the tread is soft enough and can lock the nails at the same time, improving the ice performance of the tire.



SNOW&ICE



BRAKING



STABILITY



DRAINAGE



TRAFICOM/664800/05.03.42/2023

A FI0037

## ROYAL STUD II M+S



Size	PR	Loading Index	Speed Rating	Tread Depth (mm)	Inflatable Section Width(mm)	Standard Rim	Overall Diameter (mm)	UTQG	Kg	MAX Load 1BS	MAX Pressure Kpa	MAX Pressure Psi	Sidewall Description	
17	LT265/70R17	10PR	121/118	S	10.6	272	8.0J	804	-	1450/1320	3195/2910	550	80	BSW
	265/65R17 XL	-	116	T	9.1	272	8.0J	776	-	1250	2756	340	50	BSW
	235/65R17 XL	-	108	T	9.1	240	7.0J	738	-	1000	2205	340	50	BSW
	235/55R17 XL	-	103	T	9.1	245	7.5J	690	-	875	1929	340	50	BSW
	225/65R17 XL	-	106	T	9.1	228	6.5J	724	-	950	2094	340	50	BSW
	225/60R17 XL	-	103	T	9.1	228	6.5J	702	-	875	1929	340	50	BSW
	225/55R17 XL	-	101	H	9.1	233	7.0J	680	-	825	1819	340	50	BSW
	225/50R17 XL	-	98	H	9.1	233	7.0J	658	-	750	1653	340	50	BSW
	225/45R17 XL	-	94	H	9.1	225	7.5J	634	-	670	1477	340	50	BSW
	215/65R17 XL	-	103	T	9.1	221	6.5J	712	-	875	1929	340	50	BSW
	215/60R17 XL	-	100	T	9.1	221	6.5J	690	-	800	1764	340	50	BSW
	215/55R17 XL	-	98	T	9.1	226	7.0J	668	-	750	1653	340	50	BSW
	215/50R17 XL	-	95	T	9.1	226	7.0J	648	-	690	1521	340	50	BSW
	205/55R17 XL	-	95	T	9.1	214	6 1/2J	658	-	690	1521	340	50	BSW
	205/50R17 XL	-	93	T	9.1	214	6.5J	638	-	650	1433	340	50	BSW
16	LT245/75R16	10PR	120/116	Q	10.6	248	7J	774	-	1380/1260	3042/2778	550	80	BSW
	245/70R16 XL	-	111	T	8.6	248	7.0J	750	-	1090	2403	340	50	BSW
	235/70R16	-	106	T	8.6	240	7.0J	736	-	950	2094	300	44	BSW
	235/65R16C	12PR	121/119	R	10.6	240	7.0J	712	-	1450/1360	3195/3000	575	83	BSW
	LT225/75R16	10PR	115/112	S	10.6	223	6.0J	744	-	1215/1120	2680/2470	550	80	BSW
	225/65R16C	8PR	112/110	R	10.6	228	6.5J	698	-	1120/1060	2470/2335	475	69	BSW
	215/70R16	-	100	T	8.6	221	6.5J	708	-	800	1764	300	44	BSW
	215/65R16 XL	-	102	T	8.6	221	6.5J	686	-	850	1874	340	50	BSW
	215/60R16 XL	-	99	T	8.6	221	6.5J	664	-	775	1709	340	50	BSW
	215/55R16 XL	-	97	T	8.6	226	7J	642	-	730	1609	340	50	BSW
	205/65R16	-	95	T	8.6	209	6.0J	672	-	690	1521	300	44	BSW
	205/60R16 XL	-	96	T	8.6	209	6.0J	652	-	710	1565	340	50	BSW
	205/55R16 XL	-	94	T	8.6	214	6.5J	632	-	670	1477	340	50	BSW
	195/75R16C	8PR	107/105	R	10.6	196	5.5J	698	-	975/925	2150/2040	475	69	BSW
	195/55R16	-	87	T	8.6	201	6.0J	620	-	545	1201	300	44	BSW
15	185/75R16C	8PR	104/102	R	10.6	184	5.0J	684	-	900/850	1985/1875	475	69	BSW
	205/70R15	-	96	T	8.6	209	6.0J	669	-	710	1565	300	44	BSW
	205/65R15	-	94	T	8.6	209	6.0J	647	-	670	1477	300	44	BSW
	195/65R15 XL	-	95	T	8.6	201	6.0J	635	-	690	1521	340	50	BSW
	195/60R15 XL	-	92	T	8.6	201	6.0J	615	-	630	1389	340	50	BSW
	195/55R15	-	85	H	8.6	201	6.0J	595	-	515	1135	300	44	BSW
	185/65R15 XL	-	92	T	8.6	189	5.5J	621	-	630	1389	340	50	BSW
	185/60R15 XL	-	88	T	8.6	189	5.5J	603	-	560	1235	340	50	BSW
14	185/55R15 XL	-	86	T	8.6	194	6.0J	585	-	530	1168	340	50	BSW
	185/70R14 XL	-	92	T	8.6	189	5.5J	616	-	630	1389	340	50	BSW
	185/65R14 XL	-	90	T	8.6	189	5.5J	596	-	600	1323	340	50	BSW
	185/60R14	-	82	T	8.6	189	5.5J	578	-	475	1047	300	44	BSW
	175/70R14	-	84	T	8.6	177	5.0J	602	-	500	1102	300	44	BSW
13	175/65R14 XL	-	86	T	8.6	177	5.0J	584	-	530	1168	340	50	BSW
	175/70R13	-	82	T	8.6	177	5.0J	576	-	475	1047	300	44	BSW

The labeling information is subject to change without notice.